

Casafina
SINCE 1981



RETAIL CATALOG 2023



Style for your home

C A S A F I N A R E T A I L C A T A L O G 2 0 2 3





CASAFINA

04 About Us

06 New 2023

KITCHEN

12 Abbey

18 Cook & Host

24 Ensemble

26 Fattoria

32 Pacifica Kitchen

36 Poterie



TABLE

46 Dori New Colors '23

48 Eivissa

56 Fontana

62 Impressions

70 Madeira Harvest

74 Mallorca

80 Monterosa New'23

86 Nantucket

92 Pacifica New Colors '23

104 Positano

110 Sardegna

114 Taormina

118 Vermont New'23

124 Deer Friends - *HOLIDAY

130 The Nutcracker - *HOLIDAY

138 Alentejo Terracotta



ACCESSORIES

144 Cork Collection

146 Flatware

148 Glassware

152 Glass Domes

154 Kitchen Linens

170 Table Linens

178 Placemats

180 Wood Collection

184 Bath Collection

188 Pet Collection

COMMITMENT

191 Going Green

192 Product Guide

196 Use and Care

198 User Guide



ABOUT US

Casafina, created in 1981, offers a wide range of high-quality sustainable products, from kitchenware, bakeware, tableware, and gifts... Collections that are trend-right today as well as classics that have stood the test of time.

Crafted in Portugal by true artisans, its fine stoneware products are unique, durable, and timeless. The stoneware collections are complemented with handmade glass, cork, oak, linens, and hand-painted collections of terracotta.

All items are designed to be part of the moments that matter...



MONTEROSA

TABLEWARE COLLECTION ON PAGE 80



VERMONT

TABLEWARE COLLECTION ON PAGE 118



PACIFICA NEW COLORS

TABLEWARE COLLECTION ON PAGE 92



ACCESSORIES

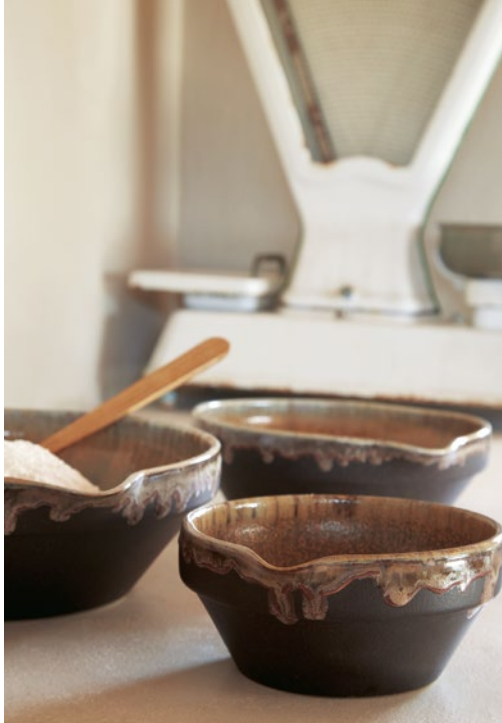
Kitchen Linens – Terry Stripes on page 168

Table Linens – Carolina on page 172

KITCHEN

Whether you are looking for kitchen accessories to improve your kitchen decor or bakeware pieces that look beautiful on the dining table, we have all you need to refresh your routines and enjoy every moment of the process. Make the kitchen your happy place.

ABBAY · COOK & HOST · ENSEMBLE
FATTORIA · PACIFICA KITCHEN · POTERIE







ABBEY

Meet the Abbey collection, a beautiful narrative of countryside living. Displaying a vibrant blue glaze, this collection has a contemporary farmhouse look with a hint of nostalgia.



The collection includes three serving pieces, three sizes of bakers, and a generous jug that is ideal for refreshing drinks on the table or freshly cut flowers. Alongside, charming kitchen accessories and bowls with a unique splatter finish applied randomly by hand; perfect for cooking or just displaying in the kitchen.







KITCHEN / ABBEY

• BLUE •



Oval platter
46 cm | 18"

WWA461-BLU

45.9 x 30.9 H4.7 cm | 1778 g
18" x 12.25" H1.75" | 3 lb 15 oz.

[1]



Footed plate
33 cm | 13"

ZAP331-BLU

D32.8 H14.2 cm | 2195 g
D13" H5.5" | 4 lb 13 oz.

[1]



Pitcher
2.04 L | 69 oz.

EVZ211-BLU

20.6 x 16 H21 cm | 2.04 L | 1385 g
8" x 6.25" H8.25" | 69 oz. | 3 lb 1 oz.

[1]



Rect. butter dish w/ lid
19 cm | 8"

ZAX191-BLU

19.4 x 9.5 H7.9 cm | 650 g
7.75" x 3.75" H3" | 1 lb 7 oz.

[1]



Oval baker
38 cm | 16"

AA381-BLU

38.9 x 24.8 H7.8 cm | 3.65 L | 1790 g
15.5" x 9.75" H3" | 123 oz. | 3 lb 15 oz.

[1]



Rect. baker
33 cm | 13"

AR331-BLU

33.1 x 21.8 H7.8 cm | 2.55 L | 1780 g
13" x 8.5" H2.5" | 86 oz. | 3 lb 15 oz.

[1]



Sq. Baker
23 cm | 9"

AQ231-BLU

23.1 x 20.0 H5.0 cm | 1.87 L | 820 g
9" x 8" H2" | 63 oz. | 1 lb 13 oz.

[1]



Batter bowl
26 cm | 10"

MBS261-BWH

26.3 x 18.6 H13 cm | 2.05 L | 1225 g
10.25" x 7.25" H5" | 69 oz. | 2 lb 11 oz.

[1]



Mixing bowl
31 cm | 12"

MBS311-BWH

D31.4 H15 cm | 6.24 L | 2702 g
D12.25" H6" | 211 oz. | 5 lb 15 oz.

[1]



Mixing bowl
24 cm | 9"

MBS241-BWH

D23.7 H12.3 cm | 2.84 L | 1179 g
D9.25" H4.75" | 96 oz. | 2 lb 1 oz.

[1]



Mixing bowl
17 cm | 7"

MBS171-BWH

D17.2 H10.4 cm | 1.21 L | 806 g
D6.75" H4" | 41 oz. | 1 lb 12 oz.

[1]



Paper towel holder
33 cm | 13"

KSD332-BLU

D18.0 H32.7 cm | 670 g
D7" H13" | 1 lb 8 oz.

[1]



Utensil holder
17 cm | 7"

DV171-BLU

D11.8 H17.0 cm | 1.10 L | 848 g
D4.75" H6.75" | 37 oz. | 1 lb 14 oz.

[1]



Spoon rest
12 cm | 5"

SOD121-BLU

D12.0 H1.9 cm | 156 g
D4.75" H0.75" | 5 oz.

[2]

Fine stoneware, glossy glaze with unique splatter finish. Oak wood. Made in Portugal.





COOK & HOST

Cook & Host is the ideal collection for the gifted host. From a charming array of bakeware pieces, to diversified serveware and also a ruffled-shaped dinnerware, the collection is the perfect choice for every hostess and party lover.



The Cook & Host collection consists of a beautiful array of cooking and serving essentials for any gathering, including bakers, pie dishes, appetizer dishes, and footed plates.





KITCHEN / COOK & HOST

• WHITE, RED & ROBIN'S EGG BLUE •



Egg platter
34 cm | 13"

○ EG341-WHI ● EG341-RBL

D33.9 H3.1 cm | 1539 g
D13.25" H1.25" | 3 lb 6 oz.
[1]



Chip and dip
33 cm | 13"

○ CD342-WHI ● CD342-RBL

D32.3 H4 cm | 1790 g
D12.75" H1.5" | 3 lb 15 oz.
[1]



Spiral appetizer dish
20 cm | 8"

○ SD201-WHI ● SD201-RBL

D20.2 H3.3 cm | 554 g
D8" H1.25" | 1 lb 4 oz.
[1]



Spiral appetizer dish
15 cm | 6"

○ SD151-WHI ● SD151-RBL

D15.1 H3.0 cm | 366 g
D6" H1.25" | 13 oz.
[6]



Rect. tray
42 cm | 17"

○ RFF421-WHI ● RFF421-RED
● RFF421-RBL

41.9 x 17.2 H3.4 cm | 1129 g
16.5" x 6.75" H1.5" | 2 lb 8 oz.
[1]



Sq. appetizer tray
33 cm | 13"

○ ST331-WHI

33.4 x 33.4 H4.3 cm | 1891 g
13.25" x 13.25" H1.75" | 4 lb 3 oz.
[1]



2-Stage centerpiece
29 cm | 12"

○ GUPS02-WHI ● GUPS02-RED

D29.0 H24.5 cm | 1500 g
D11.5" H9.75" | 3 lb 5 oz.
[1]



Footed plate
33 cm | 13"

○ VAP332-WHI ● VAP332-RED

D32.5 H20.0 cm | 2025 g
D13" H8" | 4 lb 7 oz.
[1]



Footed plate
27 cm | 11"

○ VAP276-WHI ● VAP276-RED

D26.9 H18.1 cm | 1515 g
D10.5 H7.25" | 3 lb 5 oz.
[1]



Footed plate
20 cm | 8"

○ VAP202-WHI ● VAP202-RED

D20.0 H16.2 cm | 855 g
D8" H6.5" | 1 lb 14 oz.
[1]



Footed plate
16 cm | 6"

○ VAP164-WHI ● VAP164-RED

D16.1 H14.3 cm | 660 g
D6.25" H5.75" | 1 lb 7 oz.
[1]



Footed plate
35 cm | 14"

○ RFF334-WHI ● RFF334-RED
● RFF334-RBL

D35.2 H12.0 cm | 1900 g
D14" H4.75" | 4 lb 3 oz.
[1]



Footed plate
30 cm | 12"

○ EP302-WHI ● EP302-RED
● EP302-RBL

D29.7 H11.5 cm | 1340 g
D11.5" H4.5" | 3 lb
[1]



Footed plate
23 cm | 9"

○ EP232-WHI ● EP232-RED
● EP232-RBL

D22.9 H11.5 cm | 930 g
D9" H4.5" | 2 lb
[1]

Fine stoneware, glossy glaze. Made in Portugal.

KITCHEN / COOK & HOST

• WHITE, RED & ROBIN'S EGG BLUE •



Pie dish
27 cm | 11"

○ RFF784-WHI ● RFF784-RED
● RFF784-RBL

D27.2 H5.5 cm | 1.71 L | 1236 g
D10.75" H2.25" | 58 oz. | 2 lb 12 oz.
[1]



Pie dish
17 cm | 7"

○ RFF783-WHI ● RFF783-RED
● RFF783-RBL

D16.8 H5.6 cm | 0.69 L | 472 g
D6.75" H2.25" | 23 oz. | 1 lb 1 oz.
[1]



Oval ramekin
12 cm | 5"

○ RFF780-WHI ● RFF780-RED
● RFF780-RBL

11.5 x 9.6 H6 cm | 0.22 L | 213 g
4.5" x 3.75" H2.25" | 7 oz. | 8 oz.
[4]



Rect. baker
44 cm | 17"

○ RFF440-WHI ● RFF440-RED
● RFF440-RBL

43.7 x 25.9 H8.6 cm | 5.00 L | 2552 g 17.25"
x 10.25" H3.5" | 169 oz. | 5 lb 1 oz.
[1]



Rect. baker
34 cm | 13"

○ RFF330-WHI ● RFF330-RED
● RFF330-RBL

34.6 x 21.3 H7.5 cm | 2.63 L | 1503 g
13.5" x 8.5" H3" | 89 oz. | 3 lb 5 oz.
[1]



Sq. baker
24 cm | 10"

○ RFF220-WHI ● RFF220-RED
● RFF220-RBL

24.0 x 17.1 H7 cm | 1.16 L | 930 g
9.5" x 7" H2.75" | 39 oz. | 2 lb 1 oz.
[1]



Rect. butter dish w/ lid
19 cm | 8"

○ DOX191-WHI

19.0 x 12.5 H8.0 cm | 806 g
7.5" x 5" H3.25" | 1 lb 12 oz.
[1]



Salt and pepper
0.07 L | 2 oz.

○ DODS01-WHI

6.2 x 6.2 H7.5 cm | 0.07 L | 244 g
2.5" x 2.5" H3" | 2 oz. | 9 oz.
[1]



Spoon rest
13 cm | 5"

○ SR131-WHI ● DOA131-RED
● DOA131-RBL

13.1 x 11.5 H2.1 cm | 176 g
5" x 4.4" H1" | 6 oz.
[2]

COLORS



○ White



● Red



● Robin's Egg Blue

Fine stoneware, glossy glaze. Made in Portugal.



ENSEMBLE

Simple and modern, the Ensemble collection fuses elements of great design and sustainable accessories like Portuguese cork and oak wood to create a must-have oven-to-table collection for the contemporary home.

KITCHEN / ENSEMBLE

• WHITE & BLACK •



**Gift rect. baker w/ cork tray
39 cm | 16"**

○ DR391-WHI ● DR391-BLK

40.6 x 25.8 H8.6 cm | 3.43 L | 2152 g
16" x 10.25" H3.5" | 116 oz. | 4 lb 12 oz.
[1]



**Gift sq. baker w/ cork tray
32 cm | 13"**

○ DQ321-WHI ● DQ321-BLK

32.5 x 25.2 H7.9 cm | 2.50 L | 1805 g
12.75" x 10" H3" | 85 oz. | 3 lb 16 oz.
[1]



**Gift oval cov. casserole
w/ cork tray 30 cm | 12"**

○ DH301-WHI ● DH301-BLK

32.5 x 20.8 H15.7 cm | 1.93 L | 2025 g
11.75" x 8.25" H6.25" | 65 oz. | 4 lb 7 oz.
[1]



**Gift rect. cov. casserole
w/ cork tray 24 cm | 10"**

○ DH242-WHI ● DH242-BLK

24.4 x 14.3 H12.1 cm | 0.87 L | 1320 g
9.75" x 5.75" H4.75" | 29 oz. | 2 lb 15 oz.
[1]



**Gift rect. bread box w/
oak wood lid 40 cm | 16"**

○ DX401-WHI ● DX401-BLK

39.8 x 24.3 H13.0 cm | 6.35 L | 1650 g
15.75" x 9.5" H5" | 218 oz. | 3 lb 1 oz.
[1]



**Gift rect. butter dish
w/ oak wood lid 16 cm | 6"**

○ DX161-WHI ● DX161-BLK

15.9 x 12.0 H5.9 cm | 0.55 L | 620 g
6.25" x 4.75" H2.25" | 19 oz. | 1 lb 6 oz.
[1]



**Gift sq. salt cellar
w/ oak wood lid 12 cm | 5"**

○ DX123-WHI ● DX123-BLK

11.9 x 11.9 H7.0 cm | 0.52 L | 485 g
4.75" x 4.75" H2.25" | 17 oz. | 1 lb 1 oz.
[1]



**Oak wood cutting board/lid
39 cm | 15"**

O30208-OAK

32.5 x 24.8 H2.2 cm | 1025 g
12.75" x 9.75" H1" | 2 lb 4 oz.
[1]

AVAILABLE COLORS



○ White



● Black



The Ensemble bread box comes with our oak wood/cutting board that you can also pop on your Ensemble rectangular baker. This versatile piece (available as a single item) works as a lid to keep your dish warm and also as a cutting board.





FATTORIA

The quintessential farmhouse look is the foundation of the Fattoria collection. A variety of cooking and serveware pieces like bakers, mixing bowls, 3-size canisters, generous pitchers... transport lovers of a traditional Italian kitchen look to a more contemporary approach without losing its inherent country charm.



All Fattoria items are available in white, while a subset of pieces can be purchased in a pale grey.





KITCHEN / FATTORIA

• WHITE & GREY •



Oval platter
40 cm | 16"

○ FA541-WHI

40.3 x 29.8 H3.4 cm | 1430 g
16" x 11.75" H1.5" | 3 lb 2 oz.

[1]



Pitcher
5.35 L | 182 oz.

○ FA530-WHI

27.1 x 21.5 H26.3 cm | 5.38 L | 2554 g
10.75" x 8.5" H10.25" | 182 oz. | 5 lb 1 oz.

[1]



Pitcher
2.04 L | 69 oz.

○ FA531-WHI

20.6 x 16.0 H21.0 cm | 2.04 L | 1385 g
8" x 6.25" H8.25" | 69 oz. | 3 lb 1 oz.

[1]



Creamer
0.19 L | 6 oz.

○ FA532-WHI ● FA532-GRY

10.9 x 7.3 H9.1 cm | 0.19 L | 238 g
4.25" x 2.75" H3.5" | 6 oz. | 8 oz.

[1]



Juice/citrus squeezer
17 cm | 7"

○ FA564-WHI

17.4 x 13.1 H8.5 cm | 0.15 L | 419 g
6.75" x 5.25" H3.25" | 5 oz. | 15 oz.

[1]



Cruet
0.35 L | 12 oz.

○ FA560-WHI

6.5 x 6.4 H21.6 cm | 0.35 L | 244 g
2.5" x 2.5" H8.5" | 12 oz. | 9 oz.

[1]



Rect. butter dish w/ lid
19 cm | 8"

○ FA568-WHI

18.8 x 10.7 H7.7 cm | 636 g
7.5" x 4.25" H3" | 1 lb 6 oz.

[1]



Egg crate holder
(half dozen) 18 cm | 7"

○ FA569-WHI

18.0 x 12.5 H5.1 cm | 650 g
7" x 5" H2" | 1 lb 7 oz.

[1]



Salt pig/cellar
14 cm | 6"

○ FA572-WHI

14.2 x 13.9 H9.7 cm | 0.55 L | 500 g
5.5" x 5.5" H4" | 19 oz. | 1 lb 2 oz.

[1]



Garlic canister
14 cm | 5"

○ FA558-WHI

D13.6 H13.9 cm | 0.28 L | 653 g
D5.25" H5.5" | 10 oz. | 1 lb 7 oz.

[1]



Paper towel holder
33 cm | 13"

○ FA566-WHI

D18 H32.7 cm | 745 g
D7" H13" | 1 lb 1 oz.

[1]



Utensil holder
18 cm | 7"

○ FA567-WHI

D13.1 H18.3 cm | 1.72 L | 1161 g
D5" H7.25" | 58 oz. | 2 lb 9 oz.

[1]



Canister
21 cm | 8"

○ FA556-WHI

D18.8 H20.9 cm | 2.77 L | 2298 g
D7.5" H8.25" | 94 oz. | 5 lb 1 oz

[1]



Canister
17 cm | 7"

○ FA555-WHI

D15.1 H17.2 cm | 1.46 L | 1278 g
D6" H6.75" | 49 oz. | 2 lb 13 oz.

[1]



Canister
14 cm | 5"

○ FA554-WHI

D12.1 H13.6 cm | 0.71 L | 683 g
D4.75" H5.25" | 24 oz. | 1 lb 8 oz.

[1]



Spoon rest
23 cm | 9"

○ FA540-WHI

23.1 x 11.5 H2.1 cm | 196 g
9" x 4.5" H0.75" | 7 oz.

[2]

Fine stoneware, glossy glaze. Beech wood. Made in Portugal.

KITCHEN / FATTORIA

• WHITE & GREY •



Loaf pan
19 cm | 8"

○ FA522-WHI

19.4 x 11.6 H7.2 cm | 0.79 L | 580 g
7.75" x 4.5" H2.75" | 27 oz. | 1 lb 4 oz.
[1]



R. baking pan
27 cm | 11"

○ FA524-WHI

D27.1 H6.2 cm | 1.79 L | 1270 g
D10.75" H2.5" | 60 oz. | 2 lb 13 oz.
[1]



Set 4 individual cake pans
12 cm | 4"

○ FA570-WHI

D10.2 H5.2 cm | 0.23 L | 1168 g
D4" H2.5" | 7.5 oz. | 2 lb 9 oz.
[1]



Colander
24 cm | 10"

○ FA562-WHI

D23.8 H8.1 cm | 823 g
D9.25" H3.25" | 1 lb 13 oz.
[1]



Batter bowl
26 cm | 10"

○ FA545-WHI ● FA545-GRY

26.3 x 18.6 H13 cm | 2.05 L | 1225 g
10.25" x 7.25" H5" | 69 oz. | 2 lb 11 oz.
[1]



Set 3 measuring cups

○ FA550/1/2-WHI

250 ml. 125 ml. 75 ml | 542 g
1 cup. 1/2 cup. 1/3 cup | 1 lb 3 oz.
[1]



Mixing bowl
31 cm | 12"

○ FA547-WHI ● FA547-GRY

D31.4 H15 cm | 6.24 L | 2702 g
D12.25" H6" | 211 oz. | 5 lb 15 oz.
[1]



Mixing bowl
24 cm | 9"

○ FA548-WHI ● FA548-GRY

D23.7 H12.3 cm | 2.84 L | 1179 g
D9.25" H4.75" | 96 oz. | 2 lb 1 oz.
[1]



Mixing bowl
17 cm | 7"

○ FA549-WHI ● FA549-GRY

D17.2 H10.4 cm | 1.21 L | 806 g
D6.75" H4" | 41 oz. | 1 lb 12 oz.
[1]



Rect. baker
35 cm | 14"

○ FA536-WHI ● FA536-GRY

35.0 x 24.1 H7.4 cm | 3.44 L | 1637 g
13.75" x 9.5" H3" | 116 oz. | 3 lb 1 oz.
[1]



Rect. baker
27 cm | 11"

○ FA537-WHI ● FA537-GRY

27.4 x 17.8 H6.4 cm | 1.51 L | 1029 g
10.75" x 7" H2.5" | 51 oz. | 2 lb 4 oz.
[1]



Sq. baker
27 cm | 11"

○ FA525-WHI ● FA525-GRY

26.7 x 23.9 H7.3 cm | 2.21 L | 1372 g
10.5" x 9.5" H2.75" | 75 oz. | 3 lb
[1]

COLORS



R. ramekin
10 cm | 4"

○ FA520-WHI ● FA520-GRY

D10.4 H5.7 cm | 0.22 L | 220 g
D4" H2.25" | 7 oz. | 8 oz.
[6]



○ White



● Grey

Fine stoneware, glossy glaze. Beech wood. Made in Portugal.





PACIFICA KITCHEN

Pacifica offers a large selection of contemporary soft pieces made to last a lifetime. This section highlights the warm and uplifting pieces thought for the kitchen counter. From canisters and utensil holders to the 4 different-sized bakers, this selection will surely expand your kitchen with elevated details.



Dreamy tones like vanilla, artichoke, or chestnut create a classic and welcoming charm, while the rich seed grey tone accents boldly brighten your space.

KITCHEN / PACIFICA KITCHEN

• SALT, VANILLA, MARSHMALLOW, OYSTER GREY, CHESTNUT, ARTICHOKE, SEED GREY, CAYENNE & BLUEBERRY •



Paper towel holder
35 cm | 14"

- SODS01-VAN ● SODS01-SEE
- SODS01-MRS ● SODS01-ART

D18 H35 cm | 580 g
D7" H13.75" | 1 lb 5 oz.
[1]



Utensil holder/vase
19 cm | 8"

- XOY191-VAN ● XOY191-ART

D13.8 H19.0 cm | 1.9 L | 1470 g
D5.5" H7.5" | 64 oz. | 3 lb 4 oz.
[1]



Spoon rest
12 cm | 5"

- SOD121-VAN ● SOD121-SEE
- SOD121-BBY ● SOD121-CAY
- SOD121-MRS ● SOD121-ART
- SOD121-SAL ● SOD121-CHS
- SOD121-OYS

D12.0 H1.9 cm | 156 g
D4.75" H0.75" | 5 oz.
[2]



Salt cellar w/ wood lid
9 cm | 4"

- XOY092-VAN ● XOY092-SEE
- XOY092-MRS ● XOY092-ART

D9.2 H5.7 cm | 0.22 L | 208 g
D3.75" H2.25" | 7 oz. | 7 oz.
[1]



Sugar bowl w/ wood lid
9 cm | 4"

- XOXS02-VAN ● XOXS02-SEE
- XOXS02-MRS ● XOXS02-ART

D9.2 H5.7 cm | 0.22 L | 208 g
D3.75" H2.25" | 7 oz. | 7 oz.
[1]



Canister w/ oak wood lid
20 cm | 8"

- XOY201-VAN ● XOY201-ART

D19.8 H16.8 cm | 3.20 L | 2450 g
D7.75" H6.5" | 108 oz. | 5 lb 6 oz.
[1]



Canister w/ oak wood lid
15 cm | 6"

- XOY151-VAN ● XOY151-ART

D14.9 H14.0 cm | 1.35 L | 1275 g
D6" H5.5" | 46 oz. | 2 lb 13 oz.
[1]



Canister w/ oak wood lid
12 cm | 5"

- XOY121-VAN ● XOY121-ART

D12.3 H11.5 cm | 0.70 L | 790 g
D5" H4.5" | 24 oz. | 1 lb 12 oz.
[1]



Rect. baker
49 cm | 19"

- SOR491-VAN ● SOR491-SEE
- SOR491-ART

49.0 X 32.1 H9.2 cm | 7.45 L | 5160 g
19.25" x 12.25" H3.75" | 252 oz. | 11 lb 6 oz.
[1]



Rect. baker
41 cm | 16"

- SOR411-VAN ● SOR411-SEE
- SOR411-ART

40.8 x 26.9 H8.2 cm | 4.61 L | 2530 g
16" x 10.5" H3.25" | 156 oz. | 5 lb 9 oz.
[1]



Rect. baker
33 cm | 13"

- SOR331-VAN ● SOR331-SEE
- SOR331-ART

32.8 x 22.3 H7.4 cm | 2.50 L | 1890 g
13" x 9" H3" | 85 oz. | 4 lb 3 oz.
[1]



Sq. baker
31 cm | 12"

- SOQ311-VAN ● SOQ311-SEE
- SOQ311-ART ● SOQ311-CHS
- SOQ311-OYS

30.8 X 30.8 H8.1 cm | 3.15 L | 1970 g
12" x 12" H3.25" | 107 oz. | 4 lb 5 oz.
[1]



Serving bowl with oak wood lid
25 cm | 10"

- XOS252-VAN ● XOS252-ART

D25.1 H11.05 cm | 3.01 L | 1978 g
D10" H4.25" | 101 oz. | 4 lb 6 oz.
[1]



Gift oak baguette board
w/ bread knife
O30236-OAK

Baguette board: 61.2 x 8.7 H5.0 cm 24" x 3.5" H2"
Bread knife: 2.96 T0.08 cm 11.65" T0.03"
[1]



Stainless steel roasting rack
for rect. baker 41cm | 16"
O30215-MET

30.0 x 21.0 H2.3 cm
12" x 8.25" H1"
[1]



Stainless steel roasting rack
for rect. baker 33 cm | 13"
O30216-MET

24.0 x 17.2 H1.3 cm
9.5" x 6.25" H0.5"
[1]

Fine stoneware, matte glaze. Oak wood. Beech wood. Made in Portugal.





POTERIE

Casafina takes a modern approach to vintage culinary French pottery with its collection Poterie.

Inspired by the timeless gems of “Poterie en Grès”, the collection pairs unique kitchenware and dinnerware pieces with different shapes, textures, and dramatic finishes, welcoming a casual look to any home.



Vintage mixing bowls come in 3 sizes and showcase a spectacular reactive glaze on the interior, contrasting with a darker, matte glaze on the exterior. The collection also includes generous oval platter, pitcher, cruet, and spoon rest.





KITCHEN / POTERIE

• CREAM-CARAMEL •
Glossy glaze



Dinner plate
26 cm | 10"
JSP262-CRM

D26.2 H2.8 cm | 780 g
D10.25" H1" | 1 lb 12 oz.
[6]



Soup/pasta plate
25 cm | 10"
AP251-CRM

D25.2 H5.4 | 0.83 L | 825 g
D10" H2.25" | 33 oz. | 1 lb 13 oz.
[6]



Salad plate
20 cm | 8"
JSP202-CRM

D20.4 H2.8 cm | 470 g
D8" H1" | 1 lb 1 oz.
[6]



Soup/cereal bowl
13 cm | 6"
AS131-CRM

15.1 x 13.8 H6.9 cm | 0.56 L | 460 g
6" x 5.5" H2.75" | 19 oz. | 1 lb
[6]



Mug
0.38 L | 13 oz.
DC144-CRM

14.0 x 9.3 H8.8 cm | 0.38 L | 375 g
5.5" x 3.75" H3.5" | 13 oz. | 13 oz.
[6]

• CAMEL •
Glossy glaze



Dinner plate
26 cm | 10"
JSP262-CAR

D26.2 H2.8 cm | 780 g
D10.25" H1" | 1 lb 12 oz.
[6]



Soup/pasta plate
25 cm | 10"
AP251-CAR

D25.2 H5.4 | 0.83 L | 825 g
D10" H2.25" | 33 oz. | 1 lb 13 oz.
[6]



Salad plate
20 cm | 8"
JSP202-CAR

D20.4 H2.8 cm | 470 g
D8" H1" | 1 lb 1 oz.
[6]



Soup/cereal bowl
13 cm | 6"
AS131-CAR

15.1 x 13.8 H6.9 cm | 0.56 L | 460 g
6" x 5.5" H2.75" | 19 oz. | 1 lb
[6]



Mug
0.38 L | 13 oz.
DC144-CAR

14.0 x 9.3 H8.8 cm | 0.38 L | 375 g
5.5" x 3.75" H3.5" | 13 oz. | 13 oz.
[6]



R. gratin
16 cm | 6"
AA161-CAR

18.9 x 16.0 H3.8 cm | 0.36 L | 432 g
7.5" x 6.25" H1.5" | 12 oz. | 15 oz.
[6]



R. gratin
12 cm | 5"
AA121-CAR

13.9 x 11.9 H2.6 cm | 0.13 L | 185 g
5.5" x 4.75" H1" | 4 oz. | 7 oz.
[6]

Fine stoneware, glossy glaze. Beech wood. Made in Portugal.

KITCHEN / POTERIE



Rect. baker
33 cm | 13"
AR331-CAR

33.1 x 21.8 H6.4 cm | 2.55 L | 1780 g
13" x 8.8" H2.5" | 86 oz. | 3 lb 15 oz.
[1]



Sq. baker
23 cm | 9"
AQ231-CAR

23.1 x 20.0 H5.0 cm | 1.87 L | 820 g
9" x 8" H2" | 63 oz. | 1 lb 13 oz.
[1]



Cov. oval casserole
25 cm | 10"
DH251-CAR

25.2 x 15.7 H12.5 cm | 1.52 L | 1399 g
10" x 6.25" H1.5" | 51 oz. | 3 lb 1 oz.
[1]



Paper towel holder
33 cm | 13"
KSD332-CAR

D18.0 H32.7 cm | 670 g
D7" H13" | 1 lb 8 oz.
[1]

• CAMEL-LATTE •

Glossy glaze with unique finish



Serving bowl
32 cm | 13"
VAS321-LAT

D32.4 H12.0 cm | 4.52 L | 2350 g
D12.75" H4.75" | 152 oz. | 5 lb 3 oz.
[1]



Serving bowl
25 cm | 10"
VAS251-LAT

D25.0 H10.0 cm | 2.15 L | 1310 g
D9.75" H4" | 72 oz. | 2 lb 14 oz.
[1]



Serving bowl
17 cm | 7"
VAS171-LAT

D16.7 H7.2 cm | 0.56 L | 535 g
D6.5" H2.75" | 19 oz. | 1 lb 3 oz.
[6]



R. ramekin
9 cm | 4"
AN091-LAT

D9.0 H4.8 cm | 0.14 L | 180 g
D3.5" H2" | 5 oz. | 6 oz.
[6]



Footed plate
33 cm | 13"
ZAP331-LAT

D32.8 H14.2 cm | 2195 g
D13" H5.5" | 4 lb 13 oz.
[1]



Pitcher
0.97 L | 33 oz.
AZ111-LAT

15.0 x 11.6 H 16.0 cm | 0.97 L | 680 g
6" x 4.5" H6.25" | 33 oz. | 1 lb 8 oz.
[1]



Utensil holder
17 cm | 7"
DV171-LAT

D11.8 H17.0 cm | 1.10 L | 848 g
D4.75" H6.75" | 37 oz. | 1 lb 14 oz.
[1]

Fine stoneware, glossy glaze. Beech wood. Made in Portugal.

KITCHEN / POTERIE

• MOCHA-LATTE •

Glossy and matte glazes with unique finish



Oval platter
46 cm | 18"

WWA461-MOC

45.9 x 30.9 H4.7 cm | 1778 g
18" x 12.25" H1.75" | 3 lb 15 oz.
[1]



Pitcher
1.58 L | 53 oz.

AZ151-MOC

18.2 x 13.6 H18.0 cm | 1.58 L | 870 g
7.25" x 5.25" H7" | 53 oz. | 1 lb 15 oz.
[1]



Cruet
0.35 L | 12 oz.

AD221-MOC

6.5 x 6.4 H21.6 cm | 0.35 L | 400 g
2.5" x 2.5" H8.5" | 12 oz. | 14 oz.
[1]



Spoon rest
26 cm | 10"

DR271-MOC

25.7 x 7.9 H1.7 cm | 280 g
10.25" x 3" H0.75" | 10 oz.
[2]



Mixing bowl
34 cm | 14"

MBS341-MOC

33.4 x 30.2 H10.0 cm | 3.50 L | 2075 g
13.5" x 11.75" H4" | 118 oz. | 4 lb 9 oz.
[1]



Mixing bowl
27 cm | 11"

MBS271-MOC

26.5 x 24.7 H9.3 cm | 1.96 L | 1565 g
10.5" x 9.75" H3.75" | 66 oz. | 3 lb 7 oz.
[1]



Mixing bowl
20 cm | 8"

MBS191-MOC

19.3 x 18.0 H8.5 cm | 0.87 L | 930 g
7.5" x 7" H3.25" | 29 oz. | 2 lb 1 oz.
[1]

Fine stoneware, glossy glaze. Beech wood. Made in Portugal.



TABLE

Casafina tabletop collections are created by experienced artisans in one of the most environmentally conscious factories in Portugal.

NEW 2023 DORI · EIVISSA · FONTANA · IMPRESSIONS
MADEIRA HARVEST · MALLORCA · NEW 2023 MONTEROSA
NANTUCKET · NEW 2023 PACIFICA · POSITANO · SARDEGNA
TAORMINA · NEW 2023 VERMONT

HOLIDAY DEER FRIENDS · THE NUTCRACKER
TERRACOTTA COLLECTION ALENTEJO TERRACOTTA





DORI

With two beautiful glazes inspired by the blue shades of the Atlantic Ocean and the natural colors of beach shells, the Dori collection is all about happy, carefree summer days. It features fish-shaped serveware and appetizer items that are both functional and decorative.

TABLE / DORI NEW COLOR 2023

• NACAR NEW •



Dourada serving bowl (seabream)
30 cm | 12"
ERS301-NAC

29.8 x 19.6 H9.7 cm | 1.84 L | 1112 g
11.75" x 7.75" H4" | 62 oz. | 2 lb 7 oz.
[1]



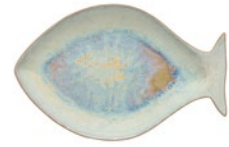
Dourada bowl (seabream)
14 cm | 6"
ERS141-NAC

14.3 x 9.0 H4.8 cm | 0.30 L | 168 g
5.75" x 3.5" H2" | 10 oz. | 6 oz.
[6]



Dourada (seabream)
43 cm | 17"
ERA432-NAC

43.2 x 27.8 H4 cm | 1190 g
17" x 11" H1.5" | 2 lb 1 oz.
[1]



Dourada (seabream)
31 cm | 12"
ERA311-NAC

30.2 x 19.2 H3.9 cm | 532 g
12" x 7.5 H1.5" | 1 lb 3 oz.
[1]



Cavala (mackerel)
43 cm | 17"
ERA431-NAC

43.3 x 12 H3.9 cm | 557 g
17" x 4.75" H1.5" | 1 lb 4 oz.
[1]



Cavala (mackerel)
20 cm | 8"
ERA201-NAC

20 x 6.6 H2.9 cm | 126 g
8" x 2.5" H1.25" | 4 oz.
[4]

• ATLANTIC BLUE •



Dourada bowl (seabream)
14 cm | 6"
DO206-BLU

14.3 x 9.0 H4.8 cm | 0.30 L | 168 g
5.75" x 3.5" H2" | 10 oz. | 6 oz.
[6]



Dourada serving bowl (seabream)
30 cm | 12"
DO230-BLU

29.8 x 19.6 H9.7 cm | 1.84 L | 1112 g
11.75" x 7.75" H4" | 62 oz. | 2 lb 7 oz.
[1]



Dourada (seabream)
43 cm | 17"
DO222-BLU

43.2 x 27.8 H4 cm | 1190 g
17" x 11" H1.5" | 2 lb 1 oz.
[1]



Dourada (seabream)
31 cm | 12"
DO220-BLU

30.2 x 19.2 H3.9 cm | 532 g
12" x 7.5 H1.5" | 1 lb 3 oz.
[1]



Cavala (mackerel)
43 cm | 17"
DO217-BLU

43.3 x 12.0 H3.9 cm | 557 g
17" x 4.75" H1.5" | 1 lb 4 oz.
[1]



Cavala (mackerel)
20 cm | 8"
DO215-BLU

20.0 x 6.6 H2.9 cm | 126 g
8" x 2.5" H1.25" | 4 oz.
[4]

Fine stoneware, glossy craquelée with unique finish. Made in Portugal.





EIVISSA

Discover our organic Eivissa collection. The natural curves are enhanced by reactive glazes creating perfectly imperfect patterns of beige sand and sea blue on the interior.



TABLE / EIVISSA



Handcrafted pieces
inspired by the sea and
the sand...
perfect for any table
and occasion.



TABLE / EIVISSA



Eivissa showcases a striking interior finish, enhanced by a minimalistic white exterior. Organically-shaped and artfully glazed, no two pieces will ever look the same.





TABLE / EIVISSA

• SAND BEIGE & SEA BLUE •



Dinner plate
28 cm | 11"

● LNP281-SND ● LNP281-SEA

D27.7 H3.3 cm | 970 g
D11" H1.25" | 2 lb 2 oz.
[6]



Salad/dessert plate
22 cm | 9"

● LNP221-SND ● LNP221-SEA

D21.7 H2.7 cm | 560 g
D8.5 H1" | 1 lb 4 oz.
[6]



Bread plate
15 cm | 6"

● LNP151-SND ● LNP151-SEA

D15.3 H2.3 cm | 235 g
D6" H1" | 8 oz.
[6]



Pasta bowl
23 cm | 9"

● GOP231-SND ● GOP231-SEA

D23.3 H5.7 cm | 0.92 L | 680 g
D9.25" H2.25" | 31 oz. | 1 lb 8 oz.
[6]



Soup/cereal bowl
16 cm | 6"

● LNS161-SND ● LNS161-SEA

D15.8 H7.7 cm | 0.67 L | 485 g
D6.25" H3" | 23 oz. | 1 lb 1 oz.
[6]



Fruit bowl
13 cm | 5"

● LNS131-SND ● LNS131-SEA

D13.0 H6.6 cm | 0.35 L | 290 g
D5" H2.5" | 12 oz. | 10 oz.
[6]



Mug
0.44 L | 15 oz.

● LNC132-SND ● LNC132-SEA

9.7 x 12.7 H10.4 | 0.44 L | 425g
3.75" x 5" H4" | 15 oz. | 15 oz.
[6]



Tea cup and saucer
0.23 L | 8 oz.

● LNCS02-SND ● LNCS02-SEA

11.6 x 9.0 H4.8 | 0.23 L D15.4 cm | 470 g
4.5" x 3.5" H2" | 8 oz. D6" | 1 lb 1 oz.
[6]



Coffee cup and saucer
0.07 L | 2 oz.

● LNCS03-SND ● LNCS03-SEA

8.1 x 6.3 H4.8 cm | 0.07 L D12.5 cm | 265 g
3.25" x 2.5" H2" | 2 oz. D5" | 9 oz.
[6]



Creamer
0.20 L | 7 oz.

● GOZ101-SND

9.2 x 7.0 H9.5 cm | 0.20 L | 165 g
3.75" x 2.75" H2" | 7 oz. | 6 oz.
[1]



Sugar bowl
0.31 L | 11 oz.

● LNN091-SND ● LNN091-SEA

9.0 x 9.0 H4.8 cm | 0.23 L | 470 g
3.5" x 3.5" H2" | 8 oz. | 1 lb 1 oz.
[1]



Pasta/serving bowl
37 cm | 15"

● GOS371-SND ● GOS371-SEA

D36.6 H6.7 cm | 3.3 L | 947 g
D14" H2.75" | 110 oz. | 2 lb 1 oz.
[1]



Serving bowl
28 cm | 11"

● LNS281-SND ● LNS281-SEA

D27.7 H11.7 cm | 3.52 L | 1780 g
D11" H4.5" | 119 oz. | 3 lb 15 oz.
[1]

Fine stoneware, glossy glaze with unique finish. Oak wood. Made in Portugal.

TABLE / EIVISSA

• SAND BEIGE & SEA BLUE •



**Oval platter
45 cm | 18"**

● GOA451-SND ● GOA451-SEA

44.7 x 30.6 H4.5 cm | 1764 g
17.5" x 12" H2" | 3 lb 14 oz.

[1]



**Oval platter
41 cm | 16"**

● LNA411-SND ● LNA411-SEA

41.0 x 14.3 H4.7 cm | 880 g
16.25" x 5.75" H2" | 1 lb 15 oz.

[1]



**Oval platter
33 cm | 13"**

● LNA331-SND ● LNA331-SEA

33.0 x 11.0 H4.7 cm | 615 g
13" x 4.25" H2" | 1 lb 6 oz.

[1]



**Oval baker
36 cm | 14"**

● LNA361-SND ● LNA361-SEA

35.9 x 22.4 H7.2 cm | 1.93 L | 1385 g
14.25" x 9" H3" | 65 oz. | 3 lb 1 oz.

[1]



**Oval baker
32 cm | 13"**

● LNA321-SND ● LNA321-SEA

31.3 x 17.3 H7.3 cm | 1.42 L | 925 g
12.25" x 6.75" H3" | 48 oz. | 2 lb 1 oz.

[1]



**Rect. baker
40 cm | 16"**

● CPR401-SND ● CPR401-SEA

40.7 x 27.6 H8.2 cm | 5.01 L | 2755 g
16" x 10.75" H3.25" | 169 oz. | 6 lb 1 oz.

[1]



**Sq. baker
32 cm | 13"**

● CPQ321-SND ● CPQ321-SEA

32.7 x 27.3 H8.8 cm | 4.31 L | 2100 g
13" x 10.75" H3.5" | 146 oz. | 4 lb 1 oz.

[1]



**Rect. baker w/ oak wood trivet
40 cm | 16"**

● CPR402-SND ● CPR402-SEA

Baker: 40.7 x 27.6 H8.2 cm | 5.01 L | 2755 g
16" x 10.75" H3.25" | 169 oz. | 6 lb 1 oz.

Trivet: 39.4 x 2.2 H4.4 cm | 296 g
15.5" x 1 H2" | 11 oz.

[1]



**Sq. baker w/ oak wood trivet
32 cm | 13"**

● CPQ322-SND ● CPQ322-SEA

Baker: 32.7 x 27.3 H8.8 cm | 4.31 L | 2100 g
13" x 10.75" H3.5" | 146 oz. | 4 lb 1 oz.

Trivet: 31.2 x 2.2 H4.4 cm | 284 g
12" x 1 H2" | 10 oz.

[1]

THE PERFECT SET! Nest your Eivissa stoneware bakers in our new form-fitting oak trivets for tableside serving.

AVAILABLE COLORS



● Sand Beige



● Sea Blue

Fine stoneware, glossy glaze with unique finish. Oak wood. Made in Portugal.





FONTANA

With organic shapes and a clean white palette, the Fontana collection was inspired by Italian gatherings at the table.

The beautiful handmade rim and the high-resistant white glaze of Fontana shines and sparkles under the sun, making it the perfect transitional collection for indoor and outdoor restaurant spaces.

TABLE / FONTANA



Fontana is the perfect transitional collection.

It can be used both indoors and outdoors.





TABLE / FONTANA

• WHITE •



Dinner plate
28 cm | 11"
○ FT301-WHI

D28.6 H2.7 cm | 805 g
D11.25" H1" | 1 lb 12 oz.
[6]



Salad plate
22 cm | 9"
○ FT303-WHI

D22.6 H2.3 cm | 445 g
D9" H1" | 16 oz.
[6]



Soup/pasta bowl
23 cm | 9"
○ FT309-WHI

D22.9 H5.7 cm | 0.94 L | 765 g
D9" H2.25" | 32 oz. | 1 lb 11 oz.
[6]



Soup/cereal bowl
15 cm | 6"
○ FT305-WHI

D15 H8 cm | 0.77 L | 508 g
D6" H3" | 26 oz. | 1 lb 2 oz.
[6]



Mug
0.40 L | 14 oz.
○ FT311-WHI

10.2 x 13.8 H9.9 cm | 0.40 L | 344 g
4" x 5.5" H4" | 14 oz. | 12 oz.
[6]



Creamer
0.34 L | 12 oz.
○ FT329-WHI

8.1 x 10.3 H13 cm | 0.34 L | 295 g
3.25" x 4" H5" | 12 oz. | 10 oz.
[1]



Sugar bowl
0.24 L | 8 oz.
○ FT330-WHI

D9.7 H10.2 cm | 0.24 L | 280 g
D4" H4" | 8 oz. | 10 oz.
[1]



Oval platter/Turkey platter
57 cm | 22"
○ FT326-WHI

56.6 x 40.4 H4.8 cm | 3625 g
22.25" x 16" H2" | 7 lb 16 oz.
[1]



Oval platter
40 cm | 16"
○ FT327-WHI

39.9 x 29.0 H4 cm | 1340 g
15.75" x 11.5" H1.5" | 2 lb 15 oz.
[1]



Pasta/serving bowl
34 cm | 13"
○ FT315-WHI

D33.8 H7.1 cm | 2.98 L | 1700 g
D13.25" H3" | 101 oz. | 3 lb 12 oz.
[1]



Serving bowl
24 cm | 10"
○ FT331-WHI

D24 H10 cm | 2.86 L | 1276 g
D9.5" H4" | 98 oz. | 2 lb 13 oz.
[1]



Footed plate
28 cm | 11"
○ FT333-WHI

D28.6 H12.5 cm | 1165 g
D11.25" H5" | 2 lb 9 oz.
[1]



Sauce/gravy boat
0.30 L | 10 oz.
○ FT340-WHI

24.1 x 8.5 H9.7 cm | 0.30 L | 446 g
9.5" x 3.5" H3.75" | 10 oz. | 16 oz.
[1]



Spoon rest
28 cm | 11"
○ FT342-WHI

27.6 x 7.8 H2.0 cm | 327 g
11" x 3" H0.75" | 12 oz.
[2]

Fine stoneware, glossy glaze. Made in Portugal.

TABLE / FONTANA

• WHITE •



Pitcher
2.43 L | 82 oz.

○ FT337-WHI

14.5 x 18.6 H26.1 cm | 2.43 L | 1205 g
5.75" x 7.5" H10.25" | 82 oz. | 2 lb 11 oz.

[1]



Glass drink dispenser w/stand
47 cm | 19"

○ FT360-WHI

D21.1 H47.0 cm | 10.0 L | 5210 g
D8.25" H18.5" | 338 oz. | 11 lb 8 oz.

[1]



Pie dish
27 cm | 11"

○ FT321-WHI

D27.2 H5.4 cm | 1.30 L | 1330 g
D10.75" H2.25" | 44 oz. | 2 lb 15 oz.

[1]



Oval baker
40 cm | 16"

○ FT316-WHI

39.4 x 29.6 H8.0 cm | 3.55 L | 2450 g
15.5" x 11.75" H3.25" | 120 oz. | 5 lb 6 oz.

[1]



Oval baker
34 cm | 13"

○ FT317-WHI

33.6 x 25.8 H7.5 cm | 2.50 L | 1720 g
13.25" x 10" H3" | 85 oz. | 3 lb 13 oz.

[1]



Rect. baker
35 cm | 14"

○ FT319-WHI

34.5 x 26.6 H7.8 cm | 3.13 L | 1848 g
13.5" x 10.5" H3" | 106 oz. | 4 lb 1 oz.

[1]



Rect. baker
29 cm | 12"

○ FT320-WHI

28.9 x 22.7 H7.0 cm | 1.80 L | 1530 g
11.5" x 9" H2.75" | 61 oz. | 3 lb 6 oz.

[1]



Sq. baker
27 cm | 11"

○ FT318-WHI

26.7 x 26.7 H7.8 cm | 2.19 L | 1404 g
10.5" x 10.5" H3" | 74 oz. | 3 lb 2 oz.

[1]

Fine stoneware, glossy glaze. Made in Portugal.





IMPRESSIONS

Classic French country shapes are the foundation of the Impressions collection. We've added texture with both a hand-sponged glaze and an antiqued border.

TABLE / IMPRESSIONS



Impressions brings back the classic and timeless style, in an unconventional glaze finish.





TABLE / IMPRESSIONS

• WHITE & ROBIN'S EGG BLUE •



Charger plate/platter
34 cm | 14"

○ IM500-WHI ● IM500-BLU

D34.3 H2.2 cm | 1340 g
D13.5" H1" | 2 lb 15 oz.
[6]



Dinner plate
30 cm | 11"

○ IM501-WHI ● IM501-BLU

D29.4 H3.2 cm | 1010 g
D11.25" H1.25" | 2 lb 4 oz.
[6]



Soup/pasta plate
24 cm | 10"

○ IM509-WHI ● IM509-BLU

D24.1 H4.5 cm | 0.52 L | 600 g
D9.5" H1.75" | 18 oz. | 1 lb 5 oz.
[6]



Salad plate
23 cm | 9"

○ IM502-WHI ● IM502-BLU

D22.5 H2.4 cm | 470 g
D8.5" H1" | 1 lb 1 oz.
[6]



Bread plate
17 cm | 7"

○ IM507-WHI ● IM507-BLU

D17.2 H1.8 cm | 300 g
D6.5" H1" | 11 oz.
[6]



Pasta bowl
23 cm | 9"

○ IM516-WHI ● IM516-BLU

D23.0 H5.3 cm | 1.19 L | 750 g
D9" H2" | 40 oz. | 1 lb 1 oz.
[6]



Soup/cereal bowl
16 cm | 6"

○ IM503-WHI ● IM503-BLU

D16.3 H7.9 cm | 0.67 L | 500 g
D6" H3" | 23 oz. | 1 lb 2 oz.
[6]



Fruit bowl
13 cm | 5"

○ IM508-WHI ● IM508-BLU

D13.0 H6.2 cm | 0.30 L | 270 g
D5" H2.5" | 10 oz. | 10 oz.
[6]



R. ramekin
10 cm | 4"

○ IM510-WHI

D10.4 H5.1 cm | 0.14 L | 200 g
D4" H2.25" | 5 oz. | 7 oz.
[6]



Mug
0.32 L | 12 oz.

○ IM504-WHI ● IM504-BLU

13.6 x 9.9 H10.1 cm | 0.32 L | 330 g
5.5" x 4" H4" | 12 oz. | 12 oz.
[6]



Jumbo cup and saucer
0.38 L | 13 oz.

○ IM512-WHI

14.6 x 11.9 H6.9 cm | 0.38 L | 634 g
5.75" x 4.75" H2.75" | 13 oz. | 1 lb 6 oz.
[6]



Consomme cup and saucer
0.38 L | 13 oz.

○ IM511-WHI

17.2 x 11.9 H6.9 cm | 0.38 L | 654 g
6.75" x 4.75" H2.75" | 13 oz. | 1 lb 7 oz.
[6]



Tea cup and saucer
0.22 L | 8 oz.

○ IM506-WHI ● IM506-BLU

12.1 x 9.7 H6.8 cm | 0.22 L | 480 g
4.75" x 3.75" H2.75" | 8 oz. | 1 lb 1 oz.
[6]



Coffee cup and saucer
0.09 L | 3 oz.

○ IM505-WHI ● IM505-BLU

9.5 x 7.5 H5.7 cm | 0.09 L | 280 g
3.75" x 3" H2.25" | 3 oz. | 10 oz.
[6]



Tea pot
1.30 L | 44 oz.

○ IM542-WHI

27.6 x 16.1 H17.9 cm | 1.30 L | 1310 g
11" x 6.25" H7" | 44 oz. | 2 lb 14 oz.
[1]



Tea pot
0.56 L | 19 oz.

○ IM541-WHI

20.1 x 11.9 H14.7 cm | 0.56 L | 607 g
8" x 4.75" H5.75" | 19 oz. | 1 lb 5 oz.
[1]

Fine stoneware, glossy glaze. Cork. Made in Portugal.

TABLE / IMPRESSIONS

• WHITE & ROBIN'S EGG BLUE •



Creamer
0.37 L | 13 oz.
○ IM539-WHI

13.0 x 9.7 H11.3 cm | 0.37 L | 290 g
5" x 3.75" H4.5" | 13 oz. | 10 oz.
[1]



Sugar bowl
0.31 L | 11 oz.
○ IM538-WHI

10.1 x 10.1 H11.5 cm | 0.31 L | 380 g
4" x 4" H4.5" | 11 oz. | 13 oz.
[1]



Oval platter
46 cm | 18"
○ IM535-WHI ● IM535-BLU

45.2 X 32.3 H3.8 cm | 1910 g
17.5" x 12.5" H1.5" | 4 lb 3 oz.
[1]



Oval platter
35 cm | 14"
○ IM534-WHI

34.8 x 25.7 H2.8 cm | 820 g
13.75" x 10" H1.0" | 1 lb 13 oz.
[1]



Pasta/serving bowl
34 cm | 13"
○ IM514-WHI ● IM514-BLU

D34.0 H6.4 cm | 2.81 L | 1800 g
D13" H2.5" | 95 oz. | 3 lb 16 oz.
[1]



Serving bowl
27 cm | 10"
○ IM536-WHI ● IM536-BLU

D26.9 H13.1 cm | 3.69 L | 1590 g
D10" H5" | 125 oz. | 3 lb 8 oz.
[1]



Serving bowl
19 cm | 8"
○ IM537-WHI

D19.2 H9.1 cm | 1.06 L | 648 g
D7.5" H3.5" | 37 oz. | 1 lb 7 oz.
[6]



Cov. rect. casserole
1.85 L | 63 oz.
○ IM525-WHI

32.3 x 18.4 H13.8 cm | 1.85 L | 1780 g
12.75" x 7.25" H5.5" | 63 oz. | 3 lb
15 oz.
[1]



Pitcher
1.92 L | 65 oz.
○ IM540-WHI ● IM540-BLU

21.0 x 15.1 H21.2 cm | 1.92 L | 1130 g
8.25" x 6" H8.25" | 65 oz. | 2 lb 8 oz.
[1]



Cruet
0.32 L | 11 oz.
○ IM546-WHI

D8.2 H18.5 cm | 0.32 L | 300 g
D3.25" H7.25" | 11 oz. | 11 oz.
[1]



Salt and pepper
0.06 L | 2 oz.
○ IM550-WHI

5.1 x 5.0 H9.9 cm | 0.06 L | 120 g
2" x 2" H4" | 2 oz. | 4 oz.
[1]

COLORS



○ White



● Robin's Egg Blue

Fine stoneware, glossy glaze. Made in Portugal.

TABLE / IMPRESSIONS

• WHITE & ROBIN'S EGG BLUE •



Pie dish
30 cm | 12"

○ IM517-WHI

D29.8 H4.2 cm | 1.85 L | 1160 g
D11.75" H1.75" | 63 oz. | 2 lb 9 oz.
[1]



Oval baker
35 cm | 14"

○ IM515-WHI

35.0 x 23.9 H7.0 cm | 2.74 L | 1420 g
13.5" x 9" H2.75" | 93 oz. | 3 lb 2 oz.
[1]



Oval baker
25 cm | 10"

○ IM513-WHI

25.4 x 17.1 H5.0 cm | 1.03 L | 610 g
10" x 7" H2.0" | 35 oz. | 1 lb 5 oz.
[1]



Rect. baker
35 cm | 14"

○ IM522-WHI ● IM522-BLU

34.5 x 24.9 H6.9 cm | 3.45 L | 1660 g
13" x 10" H2.75" | 117 oz. | 3 lb 11 oz.
[1]



Rect. baker
30 cm | 12"

○ IM521-WHI ● IM521-BLU

29.7 x 21.1 H6.2 cm | 2.20 L | 1370 g
11.5" x 8" H2.5" | 74 oz. | 3 lb
[1]



Sq. baker
25 cm | 9"

○ IM530-WHI ● IM530-BLU

24.4 x 24.2 H5.6 cm | 1.86 L | 1100 g
9" x 9" H2.25" | 63 oz. | 2 lb 7 oz.
[1]



Impressions cork placemat
45 cm | 18"

CFO0026-NAT

45.0 x 31.7 H0.5 cm
17.75" x 12.5" H0.25"
[6]



Impressions cork placemat
45 cm | 18"

CFO0027-SMK

45.0 x 31.7 H0.5 cm | 252 g
17.75" x 12.5" H0.25" | 9 oz.
[6]

Fine stoneware, glossy glaze. Cork. Made in Portugal.







MADEIRA HARVEST

Madeira Harvest was designed for elegant entertaining and also for everyday use, due to its high durability.

The handcrafted appeal of each piece creates a classic and charming look for more casual gatherings.

The collection is available in a beautiful glossy vanilla color. The dinnerware is also available in a matte black finish that brings a more sophisticated look to the collection.

TABLE / MADEIRA HARVEST

• VANILLA CRÈME & BLACK •



Charger plate/platter
34 cm | 13"

● MA242-CRM

D34.2 H2.8 cm | 1340 g
D13.5" H1" | 2 lb 15 oz.
[6]



Dinner plate
30 cm | 11"

● MA244-CRM ● MA244-BLK

D30.0 H2.8 cm | 860 g
D11" H1" | 1 lb 14 oz.
[6]



Soup/pasta plate
24 cm | 10"

● MA268-CRM ● MA268-BLK

D24.7 H3.9 cm | 0.57 L | 720 g
D9.75" H1.5" | 19 oz. | 1 lb 9 oz.
[6]



Salad plate
21 cm | 8"

● MA235-CRM ● MA235-BLK

D21.6 H2.1 cm | 430 g
D8.25" H1" | 15 oz.
[6]



Bread plate
17 cm | 7"

● MA237-CRM

D16.4 H1.8 cm | 230 g
D6.5" H1" | 8 oz.
[6]



Soup/pasta bowl
24 cm | 10"

● MA270-CRM

D25.0 H4.5 cm | 0.79 L | 700 g
D9.75" H1.75" | 27 oz. | 1 lb 9 oz.
[6]



Soup/cereal bowl
19 cm | 8"

● MA217-CRM ● MA217-BLK

D19.4 H6.4 cm | 0.65 L | 480 g
D7" H2.5" | 22 oz. | 1 lb 1 oz.
[6]



Fruit bowl
16 cm | 6"

● MA219-CRM

D16.8 H5.3 cm | 0.32 L | 360 g
D6" H2" | 11 oz. | 13 oz.
[6]



Mug
0.30 L | 10 oz.

● MA226-CRM ● MA226-BLK

12.1 x 8.9 H9.6 cm | 0.30 L | 330 g
5" x 3.75" H3.75" | 10 oz. | 12 oz.
[6]



Tea cup and saucer
0.25 L | 9 oz.

● MA228-CRM

13.5 x 10.7 H6.9 cm | 0.25 L | 500 g
5.25" x 4.25" H2.75" | 9 oz. | 1 lb 2 oz.
[6]



Coffee cup and saucer
0.09 L | 3 oz.

● MA227-CRM

9.6 x 7.7 H4.8 cm | 0.09 L | 266 g
3.75" x 3" H2" | 3 oz. | 9 oz.
[6]



Oval platter
40 cm | 16"

● MA289-CRM

39.8 x 31.5 H3.6 cm | 1560 g
16" x 12.5" H1.5" | 3 lb 7 oz.
[1]



Serving bowl
28 cm | 11"

● MA262-CRM

D28.3 H11.7 cm | 2.83 L | 1390 g
D11" H4.6" | 96 oz. | 3 lb 1 oz.
[1]

Fine stoneware, glossy glaze (vanilla crème), matte glaze (black). Made in Portugal.

TABLE / MADEIRA HARVEST

• VANILLA CRÈME & BLACK •



Appetizer dish
20 cm | 8"

● MA320-CRM

19.3 x 9.4 H4.8cm | 0.30L | 330g
7.5" x 3.75" H2" | 10 oz. | 12 oz.
[2]



Sq. Tray
22 cm | 8"

● MA298-CRM

20.8 x 20.5 H2.5 cm | 590 g
8.25" x 8.25" H1" | 1 lb 5 oz.
[2]



Dip dish
9 cm | 4"

● MA310-CRM

9.8 x 9.5 H1.9 cm | 100 g
3.75" x 3.75" H0.75" | 4 oz.
[6]



Spreader
17 cm | 7"

● MA315-CRM

17.0 x 2.5 H2.0 cm | 70 g
6.75" x 1" H0.75" | 2 oz.
[4]



Rect. baker
36 cm | 14"

● MA216-CRM

37.6 x 27.5 H6.1 cm | 2.73 L | 1780 g
14" x 10.75" H2.5" | 92 oz. | 3 lb 15 oz.
[1]



Rect. baker
30 cm | 12"

● MA225-CRM

31.7 x 23.1 H5.4 cm | 1.60 L | 1140 g
12" x 9" H2" | 54 oz. | 2 lb 8 oz.
[1]



Individual baker
13 cm | 5"

● MA231-CRM

14.2 x 13.1 H6.1 cm | 0.37 L | 400 g
5.25" x 5.25" H2.75" | 13 oz. | 14 oz.
[6]



Sq. Ramekin
9 cm | 4"

● MA207-CRM

9.2 x 9.2 H4.7 cm | 0.11 L | 170 g
3.5" x 3.5" H2" | 4 oz. | 6 oz.
[6]



Oval gratin
32 cm | 13"

● MA243-CRM

31.5 x 16.8 H5.5 cm | 0.78 L | 760 g
12.5" x 6.5" H2.25" | 26 oz. | 1 lb 11 oz.
[1]



Oval gratin
25 cm | 10"

● MA252-CRM

25.1 x 13.5 H4.7 cm | 0.38 L | 460 g
10" x 5.5" H1.5" | 13 oz. | 1 lb
[2]

COLORS



● Vanilla Crème



● Black

Fine stoneware, glossy glaze (vanilla crème), matte glaze (black). Made in Portugal.





MALLORCA

The Mallorca collection captures the natural landscape of the famous Mediterranean island, a haven of turquoise waters, soft golden sands, and impressive cliffs.

Mallorca shares its DNA with our Eivissa collection, featuring reactive glazes of sand-beige and sea-blue patterns. Yet, its soft and scalloped edges suggest a more exquisite look. Combine both collections for a casual and eclectic look.

TABLE / MALLORCA



Due to the reactive glazes, the blended patterns of sand-beige and sea-blue will vary slightly, making each piece one-of-a-kind.





TABLE / MALLORCA

• SAND BEIGE & SEA BLUE •



Dinner plate
27 cm | 11"

● ERP271-SND ● ERP271-SEA

D27.2 H3.3 cm | 1020 g
D10.75" H1.25" | 2 lb 4 oz.
[6]



Salad plate
22 cm | 9"

● ERP221-SND ● ERP221-SEA

D21.8 H2.5 cm | 560 g
D8.5" H1" | 1 lb 4 oz.
[6]



Soup/pasta bowl
24 cm | 9"

● ERP241-SND ● ERP241-SEA

D23.7 H5.8 cm | 0.79 L | 685 g
D9.25" H2.25" | 27 oz. | 1 lb 8 oz.
[6]



Soup/cereal bowl
16 cm | 6"

● ERS161-SND ● ERS161-SEA

D16.0 H7.5 cm | 0.69 L | 450 g
D6.25 H3" | 23 oz. | 16 oz.
[6]



Mug
0.44 L | 15 oz.

● ERC151-SND ● ERC151-SEA

14.7 x 10.9 H10.9 | 0.44 L | 456 g
5.75" x 4.25" H4.25" | 15 oz. | 1 lb
[6]



Oval platter
41 cm | 16"

● ERA411-SND ● ERA411-SEA

27.5 x 40.5 H3.9 | 1285 g
11" x 16" H1.75" | 2 lb 14 oz.
[1]



Pasta/serving bowl
29 cm | 12"

● ERS371-SND ● ERS371-SEA

D36.3 H6.5 | 2.85 L | 1900 g D14.5"
H2.75" | 96 oz. | 4 lb 3 oz.
[1]

COLORS



● Sand Beige



● Sea Blue

Fine stoneware, glossy glaze with unique finish. Made in Portugal.







MONTEROSA

Similar to Pacifica's sleek matte sophistication, the small and great detailed finishes of Monterosa distinguish the collection to a superior level. The ode to Scandinavian and Japanese clean minimalist styles calls for inspiration to the senses.





Design your table
to highlight the
rawness and pureness
of the collection.
Its simplicity
and cleanliness
differentiate
Monterosa to fit
any gathering.



TABLE / NEW 2023 MONTEROSA

• CREAM-COCOA •



Dinner plate
27 cm | 11"
SOP271-CRC

D27.5 H2.8 cm | 805 g
D10.75" H1" | 1 lb 12 oz.
[6]



Salad plate
23 cm | 9"
SOP231-CRC

D22.8 H2.5 cm | 546 g
D9" H1" | 1 lb 3 oz.
[6]



Soup/pasta bowl
22 cm | 9"
XOP223-CRC

D22.1 H5.0 cm | 0.99 L | 680 g
D8.75" H2" | 33 oz. | 1 lb 8 oz.
[6]



Soup/cereal bowl
15 cm | 6"
XOS151-CRC

D15.3 H6.3 cm | 0.63 L | 410 g
D6" H2.5" | 21 oz. | 14.5 oz.
[6]



Fruit bowl
12 cm | 5"
XOS121-CRC

D12.1 H6.2 cm | 0.32 L | 410 g
D4.75" H2.5" | 11 oz. | 14 oz.
[6]



Mug
0.33 L | 11 oz.
XOC121-CRC

11.8 x 8.8 H9.1 cm | 0.33 L | 290 g
4.75" x 3.75" H3.5" | 11 oz. | 10 oz.
[6]



Serving bowl
25 cm | 10"
XOS251-CRC

D25.1 H10.1 cm | 3.01 L | 1303 g
D10" H4" | 101 oz. | 11 oz.
[1]



Ramen bowl
19 cm | 8"
XOS191-CRC

D18.8 H8.2 cm | 0.97 L | 630 g
D7.5" H3.25" | 33 oz. | 1 lb 6 oz.
[6]

• CHOCOLATE-LATTE •



Dinner plate
27 cm | 11"
SOP271-CHO

D27.5 H2.8 cm | 805 g
D10.75" H1" | 1 lb 12 oz.
[6]



Salad plate
23 cm | 9"
SOP231-CHO

D22.8 H2.5 cm | 546 g
D9" H1" | 1 lb 3 oz.
[6]



Soup/pasta bowl
22 cm | 9"
XOP223-CHO

D22.1 H5.0 cm | 0.99 L | 680 g
D8.75" H2" | 33 oz. | 1 lb 8 oz.
[6]



Soup/cereal bowl
15 cm | 6"
XOS151-CHO

D15.3 H6.3 cm | 0.63 L | 410 g
D6" H2.5" | 21 oz. | 14.5 oz.
[6]



Fruit bowl
12 cm | 5"
XOS121-CHO

D12.1 H6.2 cm | 0.32 L | 410 g
D4.75" H2.5" | 11 oz. | 14 oz.
[6]



Mug
0.33 L | 11 oz.
XOC121-CHO

11.8 x 8.8 H9.1 cm | 0.33 L | 290 g
4.75" x 3.75" H3.5" | 11 oz. | 10 oz.
[6]



Serving bowl
25 cm | 10"
XOS251-CHO

D25.1 H10.1 cm | 3.01 L | 1303 g
D10" H4" | 101 oz. | 11 oz.
[1]



Ramen bowl
19 cm | 8"
XOS191-CHO

D18.8 H8.2 cm | 0.97 L | 630 g
D7.5" H3.25" | 33 oz. | 1 lb 6 oz.
[6]

Fine stoneware, matte glaze. Made in Portugal.







NANTUCKET

Slightly organic in shape, the Nantucket collection features beautiful blue stripes that resemble ocean waves.

The inspiration for this tableware collection comes from the charming Island of Nantucket (USA), where beaches are always perfectly windswept and life meanders at a slower pace.



The collection features serveware pieces and salad plates in two different patterns - stripes and dots - a perfect way to create playful layers on the table. You can also use them as side plates for serving tapas and small appetizers.





TABLE / NANTUCKET

• WHITE & AQUA •



Dinner plate
27 cm | 11"

○ LSP273-WHI ● LSP273-AQU

D27.2 H3.8 cm | 716 g
D10.75" H1.5" | 1 lb 9 oz.
[6]



Soup/pasta plate
25 cm | 10"

○ LSP251-WHI ● LSP251-AQU

D25.5 H4.6 cm | 0.79 L | 610 g
D10" H1.75" | 27 oz. | 1 lb 5 oz.
[6]



Salad/dessert plate
21 cm | 8"

○ LSP216-WHI ● LSP216-AQU

D21.1 H3.1 cm | 452 g
D8.25" H1.25" | 1 lb
[6]



Salad/dessert plate
21 cm | 8"

○ LSP216-WDT ● LSP216-ADT

D21.1 H3.1 cm | 452 g
D8.25" H1.25" | 1 lb
[6]



Salad/dessert plate
21 cm | 8"

○ LSP216-WST ● LSP216-AST

D21.1 H3.1 cm | 452 g
D8.25" H1.25" | 1 lb
[6]



Soup/cereal bowl
16 cm | 6"

○ LNS161-WHI ● LNS161-AQU

D15.8 H7.7 cm | 0.67 L | 485 g
D6.25" H3" | 23 oz. | 1 lb 1 oz.
[6]



Mug
0.50 L | 17 oz.

○ SLC143-WHI ● SLC143-AQU

14.3 x 10.9 H9.9 cm | 0.50 L | 436 g
5.75" x 4.25" H4" | 17 oz. | 15 oz.
[6]



Oval platter
40 cm | 16"

○ LSA401-WHI ● LSA401-AQU

40.0 x 28.3 H4.5 cm | 1322 g
15.75" x 11.25" H1.75" | 2 lb 15 oz.
[1]



Pasta/serving bowl
34 cm | 14"

○ LSP342-WHI ● LSP342-AQU

D34.4 H7.0 cm | 3.31 L | 1780 g
D13.5" H2.75" | 112 oz. | 3 lb 15 oz.
[1]



Serving bowl
28 cm | 11"

○ LNS281-WHI ● LNS281-AQU

D27.7 H11.7 cm | 3.52 L | 452 g
D11" H4.5" | 119 oz. | 1 lb
[1]

COLORS



○ White



● Aqua

Fine stoneware, glossy glaze. Made in Portugal.







PACIFICA

As an alternative to a more traditional, lustrous look, our Pacifica collection showcases a matte finish that works as well for everyday meals as it does for weekend casual gatherings.

TABLE / PACIFICA



New arrivals:
Oyster Grey and
Chestnut, two
beautiful and peaceful
shades that will
complement the wide
range of colors of the
Pacifica collection.







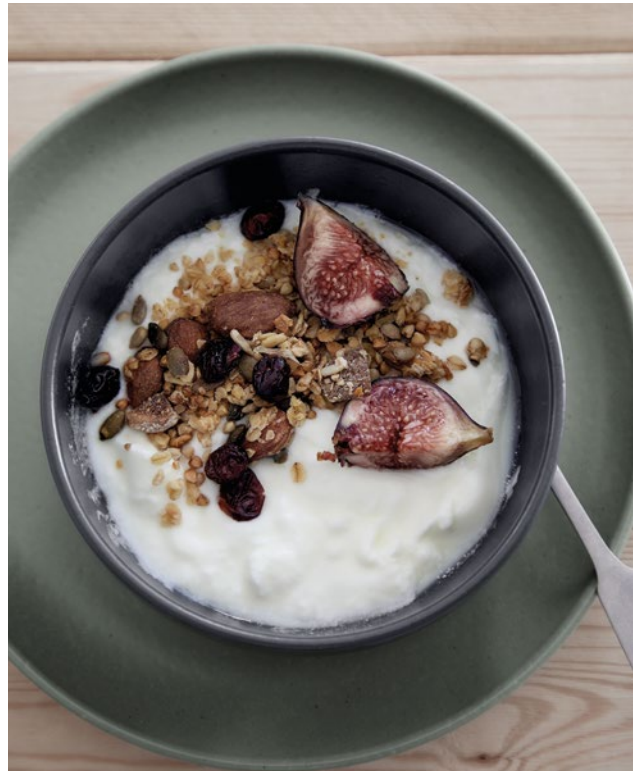
TABLE / PACIFICA



Make it simple,
and beautiful... for a
carefree attitude
at the table.



TABLE / PACIFICA



The collection also features a beautiful selection of mixed materials combining wood, leather and stoneware.



TABLE / PACIFICA

• SALT, VANILLA, MARSHMALLOW, OYSTER GREY, CHESTNUT, ARTICHOKE, SEED GREY, CAYENNE & BLUEBERRY •



Dinner plate
27 cm | 11"

- SOP271-VAN ● SOP271-SEE
- SOP271-BBY ● SOP271-CAY
- SOP271-MRS ● SOP271-ART
- SOP271-SAL ● SOP271-CHS
- SOP271-OYS

D27.5 H2.8 cm | 805 g
D10.75" H1" | 1 lb 12 oz.
[6]



Salad plate
23 cm | 9"

- SOP231-VAN ● SOP231-SEE
- SOP231-BBY ● SOP231-CAY
- SOP231-MRS ● SOP231-ART
- SOP231-SAL ● SOP231-CHS
- SOP231-OYS

D22.8 H2.5 cm | 546 g
D9" H1" | 1 lb 3 oz.
[6]



Bread plate
16 cm | 6"

- SOP161-VAN ● SOP161-SEE
- SOP161-BBY ● SOP161-CAY
- SOP161-MRS ● SOP161-ART
- SOP161-SAL ● SOP161-CHS
- SOP161-OYS

D16.0 H2.2 cm | 238 g
D6.25" H1" | 8 oz.
[6]



Soup/pasta bowl
22 cm | 9"

- XOP223-VAN ● XOP223-SEE
- XOP223-BBY ● XOP223-CAY
- XOP223-MRS ● XOP223-ART
- XOP223-SAL ● XOP223-CHS
- XOP223-OYS

D22.1 H5.0 cm | 0.99 L | 680 g
D8.75" H2" | 33 oz. | 1 lb 8 oz.
[6]



Soup/cereal bowl
15 cm | 6"

- XOS151-VAN ● XOS151-SEE
- XOS151-BBY ● XOS151-CAY
- XOS151-MRS ● XOS151-ART
- XOS151-SAL ● XOS151-CHS
- XOS151-OYS

D15.3 H6.3 cm | 0.63 L | 410 g
D6" H2.5" | 21 oz. | 14 oz.
[6]



Fruit bowl
12 cm | 5"

- XOS121-VAN ● XOS121-SEE
- XOS121-BBY ● XOS121-CAY
- XOS121-MRS ● XOS121-ART
- XOS121-SAL ● XOS121-CHS
- XOS121-OYS

D12.1 H6.2 cm | 0.32 L | 410 g
D4.75" H2.5" | 11 oz. | 14 oz.
[6]



Round ramekin
9 cm | 4"

- XOC091-VAN ● XOC091-SEE
- XOC091-BBY ● XOC091-CAY
- XOC091-MRS ● XOC091-ART
- XOC091-SAL ● XOC091-CHS
- XOC091-OYS

D9.2 H5.7 cm | 0.22 L | 208 g
D3.75" H2.25" | 7 oz. | 7 oz.
[6]



Ramekin/butter dish
7 cm | 3"

- COD071-VAN ● COD071-SEE
- COD071-BBY ● COD071-CAY
- COD071-MRS ● COD071-ART
- COD071-SAL ● COD071-CHS
- COD071-OYS

D7.2 H2.1 cm | 0.02 L | 74 g
D2.75" H1" | 1 oz. | 3 oz.
[6]



Mug
0.33 L | 11 oz.

- XOC121-VAN ● XOC121-SEE
- XOC121-BBY ● XOC121-CAY
- XOC121-MRS ● XOC121-ART
- XOC121-SAL ● XOC121-CHS
- XOC121-OYS

11.8 x 8.8 H9.1 cm | 0.33 L | 290 g
4.75" x 3.75" H3.5" | 11 oz. | 10 oz.
[6]



Tea cup and saucer
0.22 L | 7 oz.

- XOCS01-VAN ● XOCS01-SEE
- XOCS01-BBY ● XOCS01-CAY
- XOCS01-MRS ● XOCS01-ART
- XOCS01-SAL

12.1 x 9.2H5.7cm | 0.22L D15.9cm | 472 g
4.5" x 3.75" H2.25" | 7 oz. D6.25" | 1 lb 1 oz.
[6]



Coffee cup and saucer
0.07 L | 2 oz.

- XOCS05-VAN ● XOCS05-SEE
- XOCS05-BBY ● XOCS05-CAY
- XOCS05-MRS ● XOCS05-ART
- XOCS05-SAL

8.0 x 6.0 H5.5 cm | 0.07 L D12 cm | 236 g
3.25" x 2.25" H2.25" | 2 oz. D4.75" | 8 oz.
[6]



Creamer
0.19 L | 6 oz.

- XOZ091-VAN ● XOZ091-SEE
- XOZ091-MRS ● XOZ091-ART

6.6 x 7.8 H8.8 cm | 0.19 L | 185 g
2.5" x 3" H3.5" | 6.42 oz. | 6.5 oz.
[1]



Sugar bowl w/ wood lid
9 cm | 4"

- XOXS02-VAN ● XOXS02-SEE
- XOXS02-MRS ● XOXS02-ART

D9.2 H5.7 cm | 0.22 L | 208 g
D3.75" H2.25" | 7 oz. | 7 oz.
[1]



Salt cellar w/ wood lid
9 cm | 4"

- XOXS02-VAN ● XOXS02-SEE
- XOXS02-MRS ● XOXS02-ART

D9.2 H5.7 cm | 0.22 L | 208 g
D3.75" H2.25" | 7 oz. | 7 oz.
[1]



Pitcher
1.64 L | 55 oz.

- XOZ212-VAN ● XOZ212-SEE
- XOZ212-BBY ● XOZ212-CAY
- XOZ212-MRS ● XOZ212-ART
- XOZ212-SAL

20.5 x 13.5 H17.8 cm | 1.64 L | 1044 g
8" x 5.25" H7" | 55 oz. | 2 lb 5 oz.
[1]



Footed plate
27 cm | 11"

- SOP272-VAN ● SOP272-SEE
- SOP272-BBY ● SOP272-CAY
- SOP272-MRS ● SOP272-ART
- SOP272-SAL ● SOP272-CHS
- SOP272-OYS

D26.8 H8.9 cm | 1300 g
D10.5 H3.5" | 2 lb 14 oz.
[1]

Fine stoneware, matte glaze. Oak wood. Beech wood. Made in Portugal.

TABLE / PACIFICA

• SALT, VANILLA, MARSHMALLOW, OYSTER GREY, CHESTNUT, ARTICHOKE, SEED GREY, CAYENNE & BLUEBERRY •



Oval platter
41 cm | 16"

- SOA411-VAN ● SOA411-SEE
- SOA411-BBY ● SOA411-CAY
- SOA411-MRS ● SOA411-ART
- SOA411-SAL ● SOA411-CHS
- SOA411-OYS

40.8 x 26.3 H4.5 cm | 1585 g
16" x 10.25" H1.75" | 3 lb 8 oz.
[1]



Oval platter
32 cm | 13"

- SOA321-VAN ● SOA321-SEE
- SOA321-BBY ● SOA321-CAY
- SOA321-MRS ● SOA321-ART
- SOA321-SAL

32.0 x 20.5 H3.6 cm | 780 g
12.5" x 8" H1.5" | 1 lb 12 oz.
[1]



Serving bowl
32 cm | 13"

- XOS321-VAN ● XOS321-SEE
- XOS321-BBY ● XOS321-CAY
- XOS321-MRS ● XOS321-ART
- XOS321-SAL ● XOS321-CHS
- XOS321-OYS

D31.8 H6.3 cm | 3.05 L | 1579 g
D12.5" H2.5" | 103 oz. | 3 lb 8 oz.
[1]



Serving bowl
25 cm | 10"

- XOS251-VAN ● XOS251-SEE
- XOS251-BBY ● XOS251-CAY
- XOS251-MRS ● XOS251-ART
- XOS251-SAL ● XOS251-OYS

D25.1 H10.1 cm | 3.01 L | 1303 g
D10" H4" | 101 oz. | 2 lb 14 oz.
[1]



Serving bowl with oak wood lid
25 cm | 10"

- XOS252-VAN ● XOS252-ART

D25.1 H11.05 cm | 3.01 L | 1978 g
D10" H4.25" | 101 oz. | 4 lb 6 oz.
[1]



Serving bowl
19 cm | 8"

- XOS192-VAN ● XOS192-SEE
- XOS192-BBY ● XOS192-CAY
- XOS192-MRS ● XOS192-ART
- XOS192-SAL ● XOS192-CHS
- XOS192-OYS

D18.7 H7.5 cm | 1.12 L | 675 g
D7.5" H3" | 37 oz. | 1 lb 8 oz.
[6]



Ramen bowl
19 cm | 8"

- XOS191-VAN ● XOS191-SEE
- XOS191-BBY ● XOS191-CAY
- XOS191-MRS ● XOS191-ART
- XOS191-SAL ● XOS191-CHS
- XOS191-OYS

D18.8 H8.2 cm | 0.97 L | 630 g
D7.5" H3.25" | 33 oz. | 1 lb 6 oz.
[6]



Ramen bowl set*

- XOSS02-VAN ● XOSS02-SEE
- XOSS02-BBY ● XOSS02-CAY
- XOSS02-MRS ● XOSS02-ART
- XOSS02-SAL

*Ramen bowl: 19 cm | 8" D18.8 H8.2 cm | 0.97 L
630 g; D7.5" H3.25" | 33 oz. | 1 lb 6 oz. Ramen
spoon: 0.02 L | 1 oz. 15.7 X 4.6 H2.8 cm 0.02 L |
68 g; 6.25" x 1.75" H1" | 1 oz. | 2 oz. Hashi holder:
5.0 x 2.0 H1.1 cm | 17 g; 2" x 1" H0.5" | 1 oz. Also
includes chopsticks.
[1]



Rect. baker
49 cm | 19"

- SOR491-VAN ● SOR491-SEE
- SOR491-ART

49.0 X 32.1 H9.2 cm | 7.45 L | 5160 g
19.25" x 12.25" H3.75" | 252 oz. | 11 lb 6 oz.
[1]



Rect. baker
41 cm | 16"

- SOR411-VAN ● SOR411-SEE
- SOR411-ART

40.8 x 26.9 H8.2 cm | 4.61 L | 2530 g
16" x 10.5" H3.25" | 156 oz. | 5 lb 9 oz.
[1]



Rect. baker
33 cm | 13"

- SOR331-VAN ● SOR331-SEE
- SOR331-ART

32.8 x 22.3 H7.4 cm | 2.50 L | 1890 g
13" x 9" H3" | 85 oz. | 4 lb 3 oz.
[1]



Sq. baker
31 cm | 12"

- SOQ311-VAN ● SOQ311-SEE
- SOQ311-ART ● SOQ311-CHS
- SOQ311-OYS

30.8 X 30.8 H8.1 cm | 3.15 L | 1970 g
12" x 12" H3.25" | 107 oz. | 4 lb 5 oz.
[1]



Canister w/ oak wood lid
20 cm | 8"

- XOX201-VAN ● XOX201-ART

D19.8 H16.8 cm | 3.20 L | 2450 g
D7.75" H6.5" | 108 oz. | 5 lb 6 oz.
[1]



Canister w/ oak wood lid
15 cm | 6"

- XOX151-VAN ● XOX151-ART

D14.9 H14.0 cm | 1.35 L | 1275 g
D6" H5.5" | 46 oz. | 2 lb 13 oz.
[1]



Canister w/ oak wood lid
12 cm | 5"

- XOX121-VAN ● XOX121-ART

D12.3 H11.5 cm | 0.70 L | 790 g
D5" H4.5" | 24 oz. | 1 lb 12 oz.
[1]

Fine stoneware, matte glaze. Oak wood. Beech wood. Made in Portugal.

TABLE / PACIFICA

• SALT, VANILLA, MARSHMALLOW, OYSTER GREY, CHESTNUT, ARTICHOKE, SEED GREY, CAYENNE & BLUEBERRY •



Paper towel holder
35 cm | 14"

- SODS01-VAN ● SODS01-SEE
- SODS01-MRS ● SODS01-ART

D18 H35 cm | 580 g
D7" H13.75" | 1 lb 5 oz.
[1]



Utensil holder/vase
19 cm | 8"

- XOV191-VAN ● XOV191-ART

D13.8 H19.0 cm | 1.9 L | 1470 g
D5.5" H7.5" | 64 oz. | 3 lb 4 oz.
[1]



Spoon rest
12 cm | 5"

- SOD121-VAN ● SOD121-SEE
- SOD121-BBY ● SOD121-CAY
- SOD121-MRS ● SOD121-ART
- SOD121-SAL ● SOD121-CHS
- SOD121-OYS

D12.0 H1.9 cm | 156 g
D4.75" H0.75" | 5 oz.
[2]



**Gift oak baguette board
w/ bread knife**
O30236-OAK

Baguette board: 61.2 x 8.7 H5.0 cm 24" x 3.5" H2"
Bread knife: 2.96 T0.08 cm 11.65" T0.03"
[1]



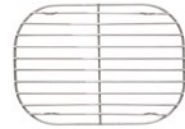
Oak baguette board
O30359-OAK

61.2 x 8.7 H5.0 cm
24" x 3.5" H2"
[1]



**Stainless steel roasting rack
for rect. baker 41cm | 16"**
O30215-MET

30.0 x 21.0 H2.3 cm
12" x 8.25" H1"
[1]



**Stainless steel roasting rack
for rect. baker 33 cm | 13"**
O30216-MET

24.0 x 17.2 H1.3 cm
9.5" x 6.25" H0.5"
[1]

• AZTEC •



Salad/dessert plate
23 cm | 9"
SOP231-AZA

D22.8 H2.5 cm | 546 g
D9" H1" | 1 lb 3 oz
[6]



Salad/dessert plate
23 cm | 9"
SOP231-AZB

D22.8 H2.5 cm | 546 g
D9" H1" | 1 lb 3 oz
[6]



Salad/dessert plate
23 cm | 9"
SOP231-AZC

D22.8 H2.5 cm | 546 g
D9" H1" | 1 lb 3 oz
[6]



Salad/dessert plate
23 cm | 9"
SOP231-AZD

D22.8 H2.5 cm | 546 g
D9" H1" | 1 lb 3 oz
[6]

COLORS



- Salt (white)
- Vanilla
- Marshmallow
- Oyster Grey
- Chestnut
- Artichoke
- Seed Grey
- Cayenne
- Blueberry

Fine stoneware, matte glaze. Oak wood. Beech wood. Made in Portugal.







POSITANO

Like the famous town on the Amalfi Coast, the Positano collection is a medley of colors. Deep red, vivid green, toasted yellow, warm white, and sea blues contrast perfectly with each other in a stunning combination.

TABLE / POSITANO



Made of fine stoneware, Positano combines a unique hand painted design in a matte finish with artisan skills.







TABLE / POSITANO

• WHITE, BLUE, CYAN, ALOE, GEMA & AMORA •



Dinner plate
28 cm | 11"

○ XCP281-WHI ● XCP281-BLU
● XCP281-CBL ● XCP281-GRN
● XCP281-YEL ● XCP281-BRD

D27.8 H3.1 cm | 788 g
D11" H1.25" | 1 lb 12 oz.
[6]



Soup/pasta plate
24 cm | 10"

○ XCP241-WHI ● XCP241-BLU
● XCP241-CBL ● XCP241-GRN
● XCP241-YEL ● XCP241-BRD

D24.2 H4.8 cm | 0.80 L | 570 g
D9.5" H2" | 27 oz. | 1 lb 4 oz.
[6]



Salad plate
22 cm | 9"

○ XCP221-WHI ● XCP221-BLU
● XCP221-CBL ● XCP221-GRN
● XCP221-YEL ● XCP221-BRD

D21.8 H2.5 cm | 446 g
D8.5" H1" | 16 oz.
[6]



Soup/cereal bowl
17 cm | 7"

○ XCS171-WHI ● XCS171-BLU
● XCS171-CBL ● XCS171-GRN
● XCS171-YEL ● XCS171-BRD

D16.6 H6.7 cm | 0.56 L | 389 g
D6.5" H2.75" | 19 oz. | 14 oz.
[6]



Mug
0.38 L | 13 oz.

○ XCC141-WHI ● XCC141-BLU
● XCC141-CBL ● XCC141-GRN
● XCC141-YEL ● XCC141-BRD

13.6 x 10.4 H10.0 cm | 0.38 L | 375 g
5.25" x 4" H4" | 13 oz. | 13 oz.
[6]



Coffee cup and saucer
0.08 L | 3 oz.

○ XCCS02-WHI ● XCCS02-BLU
● XCCS02-CBL ● XCCS02-GRN
● XCCS02-YEL ● XCCS02-BRD

8.5 x 6.6 H6.5 cm | 0.08 L D12.0 cm | 260 g
3.25" x 2.5" H2.5 | 3 oz. D4.75" | 9 oz.
[6]



Oval platter
40 cm | 16"

○ XCA401-WHI ● XCA401-BLU
● XCA401-CBL ● XCA401-GRN
● XCA401-YEL ● XCA401-BRD

40.0 x 29.9 H4.1 cm | 1488 g
15.75" x 11.75" H1.5" | 3 lb 4 oz.
[1]



Serving bowl
28 cm | 11"

○ XCS281-WHI ● XCS281-BLU
● XCS281-CBL ● XCS281-GRN
● XCS281-YEL ● XCS281-BRD

D27.7 H8.0 cm | 1.88 L | 1134 g
D11" H3.25" | 64 oz. | 2 lb 8 oz.
[1]

AVAILABLE COLORS



○ White



● Blue



● Cyan



● Aloe



● Gema



● Amora

Fine stoneware, matte glaze. Made in Portugal.





SARDEGNA

Sardegna has the artistic style of a potter's creation. The collection includes generously sized dinnerware and a wide assortment of serveware and accessories that are amazingly durable, yet moderately lightweight. All pieces are hand-finished with a rustic glaze around the rim.

TABLE / SARDEGNA

• WHITE •



Dinner plate
28 cm | 11"

○ SD702-WHI

D28.2 H3.2 cm | 820 g
D11" H1.25" | 1 lb 13 oz.
[6]



Salad plate
24 cm | 10"

○ SD703-WHI

D24.3 H3.3 cm | 668 g
D9.5" H1.25" | 1 lb 8 oz.
[6]



Bread plate
17 cm | 7"

○ SD704-WHI

D16.2 H2.4 cm | 259 g
D6.5" H1" | 9 oz.
[6]



Soup/pasta bowl
19 cm | 7"

○ SD718-WHI

D18.7 H6 cm | 0.72 L | 593 g
D7.25" H2.25" | 24 oz. | 1 lb 5 oz.
[6]



Soup/cereal bowl
15 cm | 6"

○ SD705-WHI

D14.9 H9.3 cm | 0.76 L | 550 g
D5.75" H3.75" | 26 oz. | 1 lb 3 oz.
[6]



Fruit bowl
12 cm | 5"

○ SD706-WHI

D12.1 H5.5 cm | 0.22 L | 255 g
D4.75" H2.25" | 7 oz. | 9 oz.
[6]



Ramekin/butter dish
8 cm | 3"

○ SD721-WHI

D7.7 H3.6 cm | 0.06 L | 115 g
D3" H1.5" | 2 oz. | 4 oz.
[6]



Mug
0.36 L | 12 oz.

○ SD708-WHI

14.2 x 10.2 H11 cm | 0.36 L | 417 g
5.5" x 4" H4.25" | 12 oz. | 15 oz.
[6]



Oval platter
46 cm | 18"

○ SD745-WHI

45.9 x 30.9 H4.7 cm | 1778 g
18" x 12.25" H1.75" | 3 lb 15 oz.
[1]



Pasta/Serving bowl
30 cm | 12"

○ SD720-WHI

D29.9 H8.8 cm | 3.44 L | 1590 g
D11.75" H3.5" | 116 oz. | 3 lb 8 oz.
[1]



Footed/Serving bowl
26 cm | 10"

○ SD722-WHI

D26.1 H12 cm | 3.80 L | 1460 g
D10.25" H4.25" | 129 oz. | 3 lb 4 oz.
[1]

Fine stoneware, glossy glaze. Made in Portugal.

TABLE / SARDEGNA

• WHITE •



Pitcher
2.04 L | 69 oz.
○ SD750-WHI

20.6 x 16.0 H21.0 cm | 2.04 L | 1385 g
8" x 6.25" H8.25" | 69 oz. | 3 lb 1 oz.
[1]



Rect. platter
45 cm | 18"
○ SD747-WHI

45.0 x 33.0 H4.4 cm | 2982 g
17.75" x 13" H1.75" | 6 lb 9 oz.
[1]



Rect. tray
37 cm | 15"
○ SD748-WHI

37.0 x 13.9 H3.1 cm | 850 g
14.5" x 5.5" H1.25" | 1 lb 14 oz.
[1]



Rect. baker
40 cm | 16"
○ SD739-WHI

40.2 x 27.4 H10.7 cm | 3.13 L | 1755 g
15.75" x 10.75" H4.25" | 106 oz. | 3 lb 14 oz.
[1]



Sq. baker
26 cm | 11"
○ SD737-WHI

26.6 x 21.1 H9.5 cm | 1.42 L | 1009 g
10.5" x 8.25" H3.75" | 48 oz. | 2 lb 4 oz.
[1]



Oval baker
32 cm | 13"
○ SD735-WHI

32.4 x 18.5 H7.8 cm | 0.97 L | 1090 g
12.75" x 7.25" H3" | 33 oz. | 2 lb 6 oz.
[1]





TAORMINA

The Taormina collection embodies today's modern aesthetics. Available in white and aqua, Taormina endures for everyday use. The white is also available with a gold rim, a sophisticated look for special occasions.

TABLE / TAORMINA

• WHITE & AQUA •



Charger plate
34 cm | 14"

● TA600-WHI ● TA600-AQU

D34.6 H2.7 cm | 1480 g
D13.5" H1" | 3 lb 4 oz.
[6]



Dinner plate
27 cm | 11"

● TA601-WHI ● TA601-AQU

D27.0 H2.9 cm | 834 g
D10.75" H1.25" | 1 lb 13 oz.
[6]



Salad plate
21 cm | 9"

● TA603-WHI ● TA603-AQU

D21.6 H2.8 cm | 490 g
D8.5" H1" | 1 lb 1 oz.
[6]



Bread plate
17 cm | 7"

● TA604-WHI ● TA604-AQU

D16.7 H2.3 cm | 270 g
D6.5" H1" | 10 oz.
[6]



Soup/pasta bowl
21 cm | 9"

● TA618-WHI ● TA618-AQU

D21.5 H5.5 cm | 0.85 L | 575 g
D8.5" H2.25" | 29 oz. | 1 lb 4 oz.
[6]



Soup/cereal bowl
15 cm | 6"

● TA605-WHI ● TA605-AQU

D15.2 H7.3 cm | 0.65 L | 350 g
D6" H2.75" | 22 oz. | 12 oz.
[6]



Mug
0.41 L | 14 oz.

● TA608-WHI ● TA608-AQU

13.8 x 9.7 H10.7 cm | 0.41 L | 432 g
5.5" x 3.75" H4.25" | 14 oz. | 15 oz.
[6]



Tea cup and saucer
0.20 L | 7 oz.

● TA616-WHI ● TA616-AQU

14.0 x 10.9 H5.6 cm | 0.20 L | 460 g
5.5" x 4.25" H2.25" | 7 oz. | 1 lb
[6]



Coffee cup and saucer
0.10 L | 3 oz.

● TA615-WHI ● TA615-AQU

6.4 x 8.5 H5.6 cm | 0.10 L | 294 g
2.5" x 3.5" H2.25" | 3 oz. | 10 oz.
[6]



Oval platter
40 cm | 16"

● TA645-WHI ● TA645-AQU

41.3 x 33.1 H5.8 cm | 2050 g
16.25" x 13" H2.25" | 4 lb 8 oz.
[1]



Pasta/serving bowl
34 cm | 13"

● TA630-WHI ● TA630-AQU

D33.6 H7.2 cm | 2.90 L | 1510 g
D13.25" H2.75" | 98 oz. | 3 lb 5 oz.
[1]



Serving bowl
24 cm | 9"

● TA632-WHI ● TA632-AQU

D23.6 H10.6 cm | 2.28 L | 1115 g
D9.25" H4.25" | 77 oz. | 2 lb 7 oz.
[1]



Pitcher
1.65 L | 56 oz.

● TA650-WHI ● TA650-AQU

15.2 x 15.2 H27.7 cm | 1.65 L | 947 g
6" x 6" H11" | 56 oz. | 2 lb 1 oz.
[1]

Fine stoneware, glossy glaze with unique finish. Made in Portugal.

TABLE / TAORMINA

• WHITE-GOLD •



Dinner plate
27 cm | 11"
○ TA601-WGD

D27.0 H2.9 cm | 834 g
D10.75" H1.25" | 1 lb 13 oz.
[6]



Salad plate
21 cm | 9"
○ TA603-WGD

D21.6 H2.8 cm | 490 g
D8.5" H1" | 1 lb 1 oz.
[6]



Bread plate
17 cm | 7"
○ TA604-WGD

D16.7 H2.3 cm | 270 g
D6.5" H1" | 10 oz.
[6]



Soup/pasta bowl
21 cm | 9"
○ TA618-WGD

D21.5 H5.5 cm | 0.85 L | 575 g
D8.5" H2.25" | 29 oz. | 1 lb 4 oz.
[6]



Soup/cereal bowl
15 cm | 6"
○ TA605-WGD

D15.2 H7.3 cm | 0.65 L | 350 g
D6" H2.75" | 22 oz. | 12 oz.
[6]



Mug
0.41 L | 14 oz.
○ TA608-WGD

13.8 x 9.7 H10.7 cm | 0.41 L | 432 g
5.5" x 3.75" H4.25" | 14 oz. | 15 oz.
[6]



Tea cup and saucer
0.20 L | 7 oz.
○ TA616-WGD

14.0 x 10.9 H5.6 cm | 0.20 L | 460 g
5.5" x 4.25" H2.25" | 7 oz. | 1 lb
[6]



Oval platter
40 cm | 16"
○ TA645-WGD

41.3 x 33.1 H5.8 cm | 2050 g
16.25" x 13" H2.25" | 4 lb 8 oz.
[1]



Serving bowl
24 cm | 9"
○ TA632-WGD

D23.6 H10.6 cm | 2.28 L | 1510 g
D9.25" H4.25" | 77 oz. | 3 lb 5 oz.
[1]



Pitcher
1.65 L | 56 oz.
○ TA650-WGD

15.2 x 15.2 H27.7 cm | 1.65 L | 1115 g
6" x 6" H11" | 56 oz. | 2 lb 7 oz.
[1]

COLORS



● White



● Aqua



○ White-gold





VERMONT

Mixing the identities of handicraft and urban cosmopolitan created the Vermont collection. Pure geometry distinguishes its young contemporary look from others.

Within the homogeneity of the form tries to provoke with soft spot details. Reminiscent of ancient techniques done by artisans, soft spirals dance from the center and result in a blend formal modernity with elegant forms.



Highlight your gatherings with the smooth and balanced movements of Vermont.







TABLE / NEW 2023 VERMONT

• CREAM •



Dinner plate
27 cm | 11"
SOP271-CRM

D27.5 H2.8 cm | 805 g
D10.75" H1" | 1 lb 12 oz.
[6]



Salad plate
23 cm | 9"
SOP231-CRM

D22.8 H2.5 cm | 546 g
D9" H1" | 1 lb 3 oz.
[6]



Bread plate
16 cm | 6"
SOP161-CRM

D16.0 H2.2 cm | 238 g
D6.25" H1" | 8 oz.
[6]



Soup/pasta bowl
22 cm | 9"
XOP223-CRM

D22.1 H5.0 cm | 0.99 L | 680 g
D8.75" H2" | 33 oz. | 1 lb 8 oz.
[6]



Soup/cereal bowl
15 cm | 6"
XOS151-CRM

D15.3 H6.3 cm | 0.63 L | 410 g
D6" H2.5" | 21 oz. | 14 oz.
[6]



Fruit bowl
12 cm | 5"
XOS121-CRM

D12.1 H6.2 cm | 0.32 L | 307 g
D4.75" H2.5" | 11 oz. | 11 oz.
[6]



Round ramekin
9 cm | 4"
XOC091-CRM

D9.2 H5.7 cm | 0.22 L | 208 g
D3.75" H2.25" | 7 oz. | 7 oz.
[6]



Ramekin/butter dish
7 cm | 3"
COD071-CRM

D7.2 H2.1 cm | 0.02 L | 74 g
D2.75" H1" | 1 oz. | 3 oz.
[6]



Mug
0.33 L | 11 oz.
XOC121-CRM

11.8 x 8.8 H9.1 cm | 0.33 L | 290 g
4.75" x 3.75" H3.5" | 11 oz. | 10 oz.
[6]



Oval platter
41 cm | 16"
SOA411-CRM

40.8 x 26.3 H4.5 cm | 1585 g
16" x 10.25" H1.75" | 3 lb 8 oz.
[1]



Serving bowl
32 cm | 13"
XOS321-CRM

D31.9 H6.3 cm | 3.06 L | 1579 g
D13" H2.5" | 103 oz. | 3 lb 7 oz.
[1]



Ramen bowl
19 cm | 8"
XOS191-CRM

D18.8 H8.2 cm | 0.97 L | 630 g
D7.5" H3.25" | 33 oz. | 1 lb 6 oz.
[6]

Fine stoneware, matte glaze. Made in Portugal.





DEER FRIENDS

From the table to the tree, every family has a unique spin on holiday celebrations. Make Deer Friends part of your family's table for winter entertaining with its charming holiday pattern.



The collection is available in two colors – white and green. It allows you to create different looks throughout the festive season.





TABLE / HOLIDAY / DEER FRIENDS

• WHITE •



Set 4 dinner plates
27 cm | 11"
DF601-WHI

D27.0 H2.6 cm | 2696 g
D10.5" H1" | 5 lb 15 oz.
[1]



Set 4 salad plates
21 cm | 9"
DF604-WHI

D21.4 H2.5 cm | 1664 g
D8.5" H1" | 3 lb 11 oz.
[1]



Mug
0.32 L | 12 oz.
DF609-WHI

13.6 x 9.9 H10.1 cm | 0.32 L | 330 g
5.5" x 4" H4" | 12 oz. | 12 oz.
[4]



Oval platter
50 cm | 20"
DF622-WHI

49.8 x 35.2 H4.0 cm | 2570 g
19.75" x 14" H1.75" | 5 lb 11 oz.
[1]



Oval platter
32 cm | 13"
DF623-WHI

32.3 x 22.2 H3.1 cm | 810 g
12.75" x 8.5" H1" | 1 lb 13 oz.
[1]



Sq. tray
21 cm | 8"
DF627-WHI

21.0 x 20.7 H2.8 cm | 0.47 L | 710 g
8.25" x 8.25" H1.25" | 16 oz. | 1 lb
9 oz.
[1]



Pitcher
1.87 L | 63 oz.
DF636-WHI

22.0 x 14.0 H18.3 cm | 1.87 L | 1020 g
8.5" x 5.5" H7.5" | 63 oz. | 2 lb 4 oz.
[1]



Sq. baker
25 cm | 10"
DF637-WHI

25.3 x 25.3 H6.0 cm | 1.75 L | 1050 g
10" x 10" H2.5" | 59 oz. | 2 lb 5 oz.
[1]

• GREEN •



Set 4 salad plates
21 cm | 9"
DF604-GRN

D21.4 H2.5 cm | 1664 g
D8.5" H1" | 3 lb 11 oz.
[1]



Mug
0.32 L | 12 oz.
DF609-GRN

13.6 x 9.9 H10.1 cm | 0.32 L | 330 g
5.5" x 4" H4" | 12 oz. | 12 oz.
[4]



Soup/pasta bowl
23 cm | 9"
DF634-GRN

D23.0 H5.3 cm | 1.19 L | 750 g
D9" H2" | 40 oz. | 1 lb 1 oz.
[1]



Oval platter
32 cm | 13"
DF623-GRN

32.3 x 22.2 H3.1 cm | 810 g
12.75" x 8.5" H1" | 1 lb 13 oz.
[1]



Rect. platter
36 cm | 14"
DF620-GRN

36.7 x 26.4 H3.2 cm | 1390 g
14" x 10" H1.5" | 3 lb 1 oz.
[1]



Pitcher
1.87 L | 63 oz.
DF636-GRN

22.0 x 14.0 H18.3 cm | 1.87 L | 1020 g
8.5" x 5.5" H7.5" | 63 oz. | 2 lb 4 oz.
[1]



2 Round stage metallic holder
28 cm | 11"
ST1704-MTB

27.5 x 15.0 H33.0 cm
11" x 6" H13"
[1]

Fine stoneware, glossy glaze. Made in Portugal.







THE NUTCRACKER

Tchaikovsky's famous ballet has captivated generations as a beloved holiday tradition.

Casafina brings the spirit to your table with its Nutcracker collection.

The collection showcases original illustrations that capture the ethereal images from the beloved ballet and consists of a variety of dinnerware, serveware and decorative pieces.



This complete collection will delight all family and make the holiday season more meaningful and memorable.









Reminiscent of a childhood memory, The Nutcracker features several patterns of dancing figures, sweets and fairies, pine forests, toy soldiers, the Mouse King, Clara, and, of course, the Nutcracker. The collection's rippled edges and hand-brush rims complement the romantic white glaze.



TABLE / HOLIDAY / THE NUTCRACKER

• WHITE •



Charger plate/platter
33 cm | 13"
TP331-WHI

D34.0 H2.5 cm | 1300 g
D13.5" H1" | 2 lb 14 oz.
[1]



Dinner plate
27 cm | 11"
TP273-WHI

D27.0 H2.6 cm | 674 g
D10.75" H1" | 1 lb 8 oz.
[4]



Salad plate
21 cm | 8"
TP213-WHI

D21.4 H2.5 cm | 416 g
D8.5" H1" | 15 oz.
[4]



Salad plate - Clara
21 cm | 8"
TP213-WCL

D21.4 H2.5 cm | 416 g
D8.5" H1" | 15 oz.
[4]



Salad plate - Nutcracker
21 cm | 8"
TP213-WNT

D21.4 H2.5 cm | 416 g
D8.5" H1" | 15 oz.
[4]



Salad plate - Mouse King
21 cm | 8"
TP213-WMK

D21.4 H2.5 cm | 416 g
D8.5" H1" | 15 oz.
[4]



Salad plate - Sugar Plum Fairy
21 cm | 8"
TP213-WSF

D21.4 H2.5 cm | 416 g
D8.5" H1" | 15 oz.
[4]



Set 4 bread plates
17 cm | 7"
TPS10-WHI

D16.8 H2.3 cm | 1092 g
D6.5" H1" | 2 lb 7 oz.
[1]



Soup/pasta bowl
23 cm | 9"
TP231-WHI

D23.0 H5.3cm | 1.19 L | 750 g
D9.5" H1.5" | 40 oz. | 1 lb 10 oz.
[4]



Soup/cereal bowl
16 cm | 6"
TS161-WHI

D16.2 H8.2 cm | 0.77 L | 490 g
D6.5" H3.25" | 26 oz. | 1 lb 1 oz.
[4]



Mug
0.32 L | 11 oz.
SC131-WGL

13.6 x 9.9 H10.1 cm | 0.32 L | 330 g
D5.25" H4" | 11 oz. | 12 oz.
[4]



Oval platter
50 cm | 20"
TA501-WHI

49.8 x 35.2 H4.5 cm | 2570 g
19.5" x 13.75" H1.75" | 5 lb 11 oz.
[1]



Oval platter
40 cm | 16"
TA401-WHI

40.5 x 28.3 H3.7 cm | 1500 g
16" x 11.25" H1.5" | 3 lb 5 oz.
[1]



Rect. platter
36 cm | 14"
TR361-WHI

36.7 x 26.4 H3.1 cm | 1390 g
14" x 10" H1.5" | 3 lb 1 oz.
[1]



Set 4 ramekins
10 cm | 4"
TNS02-WHI

9.9 x 10.1 H5.0 cm | 0.15 L | 760 g
4" x 4" H2" | 5 oz. | 1 lb 11 oz.
[1]

Fine stoneware, glossy glaze. Made in Portugal.

TABLE / HOLIDAY / THE NUTCRACKER

• WHITE •



Pasta/serving bowl
34 cm | 13"
TP341-WHI

D34.0 H6.4 cm | 2.81 L | 1800 g
D13.5" H2.5" | 95 oz. | 3 lb 16 oz.
[1]



Serving bowl
26 cm | 10"
TS261-WHI

D25.5 H13.2 cm | 3.22 L | 1451 g
D10" H5" | 109 oz. | 3 lb 3 oz.
[1]



Pitcher
2.83 L | 96 oz.
PZ262-WHI

16.5 x 25.6 H21.1 cm | 2.83 L | 1630 g
6.5" x 10" H8.25" | 96 oz. | 3 lb 9 oz.
[1]



Footed plate
33 cm | 13"
TP333-WHI

D33.9 H15.6 cm | 1895 g
D13.25" H6.25" | 4 lb 3 oz.
[1]



Footed plate
27 cm | 11"
TP274-WHI

D27.1 H12.3 cm | 1095 g
D10.75" H4.75" | 2 lb 7 oz.
[1]



Footed plate
21 cm | 9"
TP215-WHI

D21.4 H8.5 cm | 700 g
D8.5" H3.25" | 1 lb 9 oz.
[1]



Canister
21 cm | 8"
DX211-WHI

D18.8 H20.9 cm | 2.77 L | 2298 g
D7.5" H8" | 94 oz. | 5 lb 1 oz.
[1]



Candle holder
12 cm | 5"
TD122-WHI

D11.8 H12.3 cm | 475 g
D4.75" H4.75" | 1 lb 1 oz.
[2]



Candle holder
4 cm | 2"
TD121-WHI

D11.8 H4.0 cm | 190 g
D4.75" H1.5" | 7 oz.
[2]



3 Round stage metallic holder
28 cm | 11"
O30175-MTB

27.5 x 27.8 H47.5 cm
10.75" x 11" H18.75"
[1]



2 Round stage metallic holder
28 cm | 11"
ST1704-MTB

27.5 x 15.0 H33.0 cm
11" x 6" H13"
[1]



Kitchen towel
100% CO
TX0208-EDC

70 x 50 cm
27.5" x 19.75"
[2]



Kitchen towel
100% CO
TX0209-WNT

70 x 50 cm
27.5" x 19.75"
[2]



Kitchen towel
100% CO
TX0210-WGL

70 x 50 cm
27.5" x 19.75"
[2]



Kitchen towel
100% CO
TX0211-WPN

70 x 50 cm
27.5" x 19.75"
[2]

Fine stoneware, glossy glaze. Made in Portugal. 100% cotton. Made in Portugal.





ALENTEJO TERRACOTTA

Made in Portugal by the hands of master artisans, Casafina's Terracotta giftware is a diverse collection of unique and charming gifts for every occasion.

TABLE / TERRACOTTA / ALENTEJO TERRACOTTA



Dinner plate
28 cm | 11"
P80-BW

D28.0 cm | 860 g
D11" | 1 lb 14 oz.
[6]



Salad plate
23 cm | 9"
P40-BW

D22.9 cm | 530 g
D9" | 1 lb 3 oz.
[6]



Soup/cereal bowl
18 cm | 7"
F30-BW

D17.8 H5.08 cm | 0.60 L | 520 g
D7" H2" | 20 oz. | 1 lb 2 oz.
[6]



Mug
0.41 L | 14 oz.
C6-BW

H10.2 cm | 0.41 L | 335 g
H4" | 14 oz. | 12 oz.
[6]



Oct. platter
34 cm | 14"
T70-BW

34.3 cm x 22.9 cm | 1210 g
13.5" x 9" | 2 lb 11 oz.
[1]



Round platter
43 cm | 17"
P400-BW

D43.2 cm | 2320 g
D17" | 5 lb 2 oz.
[1]



Round centerpiece
42 cm | 17"
F100-BW

D41.6 H8.1 cm | 2.75 L | 3150 g
D16.5" H3.25" | 95 oz. | 6 lb 15 oz.
[1]



Pasta/serving bowl
29 cm | 12"
F90-BW

D29.2 H6.35 cm | 1.85 L | 1200 g
D11.5" H2.5" | 63 oz. | 2 lb 1 oz.
[1]



Pitcher
1.65 L | 56 oz.
J300-BW

H24.1 cm | 1.65 L | 1330 g
H9.5" | 56 oz. | 2 lb 15 oz.
[1]



Pitcher
0.53 L | 18 oz.
L50-BW

H17.1 cm | 0.53 L | 775 g
H6.75" | 18 oz. | 1 lb 11 oz.
[1]



Footed plate
33 cm | 13"
FP90-BW

D33.1 H9.9 cm | 1420 g
D13" H4" | 3 lb 2 oz.
[1]



Spoon rest
27 cm | 11"
S25-BW

11.18 x 27.3 cm | 280 g
4.75" x 10.75" | 10 oz.
[2]



Spoon rest
27 cm | 11"
S25-OL

11.18 x 27.3 cm | 280 g
4.75" x 10.75" | 10 oz.
[2]

Hand-painted terracotta (earthenware) with a glossy finish. Made in Portugal.

TABLE / TERRACOTTA / ALENTEJO TERRACOTTA



Dip bowl
11 cm | 5"
T10-GP

D11.4 H5.1 cm | 0.23 L | 210 g
D4.5" H2" | 8 oz. | 7 oz.
[6]



Dip bowl
11 cm | 5"
T10-SF

D11.4 H5.1 cm | 0.23 L | 210 g
D4.5" H2" | 8 oz. | 7 oz.
[6]



Dip bowl
11 cm | 5"
T10-FI

D11.4 H5.1 cm | 0.23 L | 210 g
D4.5" H2" | 8 oz. | 7 oz.
[6]



Dip bowl
11 cm | 5"
T10-BL

D11.4 H5.1 cm | 0.23 L | 210 g
D4.5" H2" | 8 oz. | 7 oz.
[6]



Dip bowl
11 cm | 5"
T10-BW

D11.4 H5.1 cm | 0.23 L | 210 g
D4.5" H2" | 8 oz. | 7 oz.
[6]



Dip bowl
11 cm | 5"
T10-OL

D11.4 H5.1 cm | 0.23 L | 210 g
D4.5" H2" | 8 oz. | 7 oz.
[6]



Olive dish
17 cm | 7"
A06-OL

16.5 x 16.5 cm | 210 g
6.5" x 6.5" | 7 oz.
[6]



Olive dish
16 cm | 6"
A07-OL

15.5 x 15.5 cm | 300 g
6" x 6" | 11 oz.
[6]



Olive dish
13 cm | 5"
A05-OL

12.7 x 11.4 cm | 210 g
5" x 4.5" | 7 oz.
[6]



Rect. dipping plate
10 cm | 4"
A4-OB

10.2 x 7.6 cm | 0.05 L | 85 g
4" x 3" | 1.7 oz. | 3 oz.
[6]



Rect. dipping plate
10 cm | 4"
A4-SF

10.2 x 7.6 cm | 0.05 L | 85 g
4" x 3" | 1.7 oz. | 3 oz.
[6]



Rect. dipping plate
10 cm | 4"
A4-FC

10.2 x 7.6 cm | 0.05 L | 85 g
4" x 3" | 1.7 oz. | 3 oz.
[6]



Rect. dipping plate
10 cm | 4"
A4-BL

10.2 x 7.6 cm | 0.05 L | 85 g
4" x 3" | 1.7 oz. | 3 oz.
[6]



Rect. dipping plate
10 cm | 4"
A4-OG

10.2 x 7.6 cm | 0.05 L | 85 g
4" x 3" | 1.7 oz. | 3 oz.
[6]



Rect. dipping plate
10 cm | 4"
A4-OY

10.2 x 7.6 cm | 0.05 L | 85 g
4" x 3" | 1.7 oz. | 3 oz.
[6]

Hand-painted terracotta (earthenware) with a glossy finish. Made in Portugal.

ACCESSORIES

*Casafina presents an extensive range of stylish table
and kitchen accessories that harmonize with the brand's
inspiration and design.*

*This exclusive European collection is made from
the highest quality materials.*

CORK COLLECTION · FLATWARE
GLASSWARE · GLASS DOMES · NEW 2023 LINENS
PLACEMATS · OAK COLLECTION
NEW 2023 BATH COLLECTION · PET COLLECTION





CORK COLLECTION

Portugal harvests and provides approximately 50% of the world's cork supply. It is an eco-friendly product that is a natural choice to protect surfaces from heat and moisture. Its unique texture and pattern have become a chic accent for any kitchen or table.

ACCESSORIES / CORK COLLECTION



Cork trivet w/ leather handle
30 cm | 12"
 CFO0018-NT
 D30.0 cm
 D11.75"
 [2]



Cork trivet w/ leather handle
25 cm | 10"
 CFO0019-NT
 D25.0 cm
 D9.75"
 [2]



Cork trivet w/ leather handle
20 cm | 8"
 CFO0020-NT
 D20.0 cm
 D8"
 [2]



Cork trivet w/ leather handle
30 cm | 12"
 CFO0021-WN
 D30.0 cm
 D11.75"
 [2]



Cork trivet w/ leather handle
25 cm | 10"
 CFO0022-WN
 D25.0 cm
 D9.75"
 [2]



Cork trivet w/ leather handle
20 cm | 8"
 CFO0023-WN
 D20.0 cm
 D8"
 [2]



Set 4 cork rect. placemats
40 cm | 16"
 CFO0024-NT
 40.0 x 30.0 H0.3 cm
 15.75" x 11.75" H0.25"
 [1]



Set 4 cork rect. placemats
40 cm | 16"
 CFO0025-WH
 40.0 x 30.0 H0.3 cm
 15.75" x 11.75" H0.25"
 [1]



Impressions cork placemat
45 cm | 18"
 CFO0026-NAT
 45.0 x 31.7 H0.5 cm
 17.75" x 12.5" H0.25"
 [6]



Impressions cork placemat
45 cm | 18"
 CFO0027-SMK
 45.0 x 31.7 H0.5 cm
 17.75" x 12.5" H0.25"
 [6]



Set 4 rect. placemats
40 cm | 16"
 CK12104-IN
 40.1 x 29.9 H0.3 cm
 15.75" x 11.75" H0.25"
 [1]



Set 4 round placemats
37 cm | 15"
 CK12107-IG
 D36.5 H0.3 cm
 D14.5" H0.75"
 [1]



Set 4 egg shape placemats
43 cm | 17"
 CK12106-IG
 42.5 x 31.0 H0.3 cm
 16.75" x 12.25" H0.25"
 [1]



Set 4 oval placemats
44 cm | 17"
 CK12054-IN
 44.0 x 28.5 H0.3 cm
 17.25" x 11.25" H0.25"
 [1]

Cork. Made in Portugal.



FLATWARE

Meet the Pacifica flatware collection, made for modern-day life. With a contemporary design, it is expertly made in Portugal from high-quality stainless steel and dressed in a beautiful brushed finish, the ideal complement for all occasions.

ACCESSORIES / FLATWARE

• PACIFICA •



Flatware 5 pieces

C20560-BRU

1 table fork, 1 table knife,
1 table spoon, 1 dessert fork,
1 dessert spoon

[1]



Flatware 20 pieces

C20593-BRU

4 table forks, 4 table knives,
4 table spoons, 4 dessert forks,
4 dessert spoons

[1]



Flatware 24 pieces

C20561-BRU

6 table forks, 6 table knives,
6 table spoons, 6 tea spoons

[1]



Fish set (12 p.)

C20594-BRU

6 fish forks, 6 fish knives

[1]



Dessert set (18 p.)

C20595-BRU

6 dessert forks, 6 dessert knives,
6 dessert spoons

[1]



Coffee set (6 p.)

C20596-BRU

6 coffee spoons

[1]



Bread knife

C20667-BRU

[1]

TABLE KNIFE AND TABLE FORK IN DETAIL



Stainless steel 18/10, 3mm, vintage finish, solid handle. Made in Portugal.



GLASSWARE

Casafina's glassware collections are manufactured in Europe. The mouth-blown items are hand-finished by master artisans, producing beautiful irregularities that make each piece unique.

ACCESSORIES / GLASSWARE

• ALEGRA •

Pressed glass. Cut rim. Made in Poland.



**Glass carafe w/
cork stopper**
CFV0093-CLR

D9.8 H23.0 cm | 1.0 L
D3.75" H9" | 34 oz.
[1]

• FESTIVE •

Machine-blown glass. Rolled rim. Made in Portugal.



Snowflakes Tumbler
500 ml | 17 oz.
V10214-CLR

D9 H12 cm | 500 ml
D5" H4" | 17 oz.
[6]



Snowflakes Double old fashion
370 ml | 13 oz.
V10215-CLR

D9 H9 cm | 370 ml
D4" H4" | 13 oz.
[6]



Polka dots Tumbler
500 ml | 17 oz.
V10216-CLR

D9 H12 cm | 500 ml
D5" H4" | 17 oz.
[6]



Polka dots Double old fashion
370 ml | 13 oz.
V10217-CLR

D9 H9 cm | 370 ml
D4" H4" | 13 oz.
[6]

• OTTICA •

Mouth-blown glass. Rolled rim. Made in Poland.



Water glass
500 ml | 17 oz.
CFV0083-CLR

D8 H22 cm | 500 ml
D3" H9" | 17 oz.
[6]



Wine glass
320 ml | 11 oz.
CFV0084-CLR

D7 H20 cm | 320 ml
D3" H8" | 11 oz.
[6]



Flute
270 ml | 9 oz.
CFV0085-CLR

D5 H25 cm | 270 ml
D2" H10" | 9 oz.
[6]



Highball
500 ml | 17 oz.
CFV0086-CLR

D7 H16 cm | 500 ml
D3" H6" | 17 oz.
[6]



Tumbler
320 ml | 11 oz.
CFV0087-CLR

D9 H10 cm | 320 ml
D4" H4" | 11 oz.
[6]



Pitcher
1.60 L | 54 oz.
CFV0088-CLR

D12 H23 cm | 1600 ml
D5" H9" | 54 oz. | 2 lb
[1]

These glassware collections are made of lead and cadmium free glass.

ACCESSORIES / GLASSWARE

• RIVA •

Machine-blown glass. Cut rim. Made in Czech Republic.



Water glass
350 ml | 12 oz.
CFV0078-CLR

D10 H16 cm | 350 ml
D4" H6" | 12 oz.
[6]



Wine glass
260 ml | 9 oz.
CFV0079-CLR

D9 H15 cm | 260 ml
D4" H6" | 9 oz.
[6]



Flute
205 ml | 7 oz.
CFV0080-CLR

D6 H20 cm | 260 ml
D2" H8" | 9 oz.
[6]

• SENA •

Machine-blown glass. Cut rim. Made in Czech Republic.



Water glass w/ golden rim
400 ml | 14 oz.
CFV0074-CGD

D10 H20 cm | 400 ml
D4" H8" | 14 oz.
[6]



Wine glass w/ golden rim
250 ml | 9 oz.
CFV0075-CGD

D8 H19 cm | 250 ml
D3" H7" | 8 oz.
[6]



Flute w/ golden rim
220 ml | 8 oz.
CFV0076-CGD

D7 H23 cm | 220 ml
D3" H9" | 7 oz.
[6]



Tumbler w/ golden rim
300 ml | 10 oz.
CFV0077-CGD

D9 H9 cm | 300 ml
D4" H4" | 10 oz.
[6]



Water glass
400 ml | 14 oz.
CFV0070-CLR

D10 H20 cm | 400 ml
D4" H8" | 14 oz.
[6]



Wine glass
250 ml | 9 oz.
CFV0071-CLR

D8 H19 cm | 250 ml
D3" H7" | 8 oz.
[6]



Flute
220 ml | 8 oz.
CFV0072-CLR

D7 H23 cm | 220 ml
D3" H9" | 7 oz.
[6]



Tumbler
300 ml | 10 oz.
CFV0073-CLR

D9 H9 cm | 300 ml
D4" H4" | 10 oz.
[6]

• STORIA •

Machine-blown glass. Rolled rim. Made in Czech Republic.



Highball
400 ml | 14 oz.
CFV0081-CLR

D8 H15 cm | 400 ml
D3" H6" | 14 oz.
[6]



Large tumbler
330 ml | 11 oz.
CFV0082-CLR

D9 H10 cm | 330 ml
D4" H4" | 11 oz.
[6]



Highball
720 ml | 24 oz.
CFV0091-CLR

D9 H17 cm | 720 ml
D4" H7" | 24 oz.
[6]



Tumbler
360 ml | 12 oz.
CFV0092-CLR

D11 H8 cm | 360 ml
D4" H3" | 12 oz.
[6]

These glassware collections are made of lead and cadmium free crystalline glass.

SENSA COLLECTION WITH GOLDEN RIM





GLASS DOMES

For special events, or maybe just for some midday baking, what better way to display your treats than in one of our lovely footed plates and wood boards with protective glass domes.

Each dome is mouth-blown, a fascinating handmade process which ensures that each piece is one-of-a-kind.

• ARCADE •



Glass dome
30 cm | 12"
V10222-CLR

D30.5 H20.6 cm
D12" H8"
[1]



Glass dome
25 cm | 10"
V10223-CLR

D25.0 H20.6 cm
D9.75" H8"
[1]



Glass dome
18 cm | 7"
V10224-CLR

D18.0 H20.6 cm
D7" H8"
[1]



Glass dome
14 cm | 6"
V10225-CLR

D14.2 H16.5 cm
D5.75" H6.5"
[1]

Lead and cadmium free crystalline glass, mouth-blown, rolled rim. Made in Poland.





KITCHEN LINENS

Discover our wide selection of kitchen linen essentials from aprons, oven mitts, pot holders, to kitchen towels and bread bags.

Made from the best natural fibers, our kitchen linens are perfect for updating your space, bringing warmth and color. They make a wonderful gift for your family and friends.

Elegant and timeless, our kitchen linens withstand the test of time and match perfectly with our Casafina stoneware collections.

ACCESSORIES / LINENS / KITCHEN LINENS

• ALESSA •

Blueberry, Black, Classic Red, Vanilla, Chive, Spicy



Pot holder
100% CO
TX0228-ABB

20 x 20 cm
8" x 8"
[2]



Pot holder
100% CO
TX0229-ABK

20 x 20 cm
8" x 8"
[2]



Pot holder
100% CO
TX0230-AGR

20 x 20 cm
8" x 8"
[2]



Pot holder
100% CO
TX0231-ASP

20 x 20 cm
8" x 8"
[2]



Oven mitt
100% CO
TX0232-ABB

30 x 18 cm
11.75" x 7"
[2]



Oven mitt
100% CO
TX0233-ABK

30 x 18 cm
11.75" x 7"
[2]



Oven mitt
100% CO
TX0234-AGR

30 x 18 cm
11.75" x 7"
[2]



Oven mitt
100% CO
TX0235-ASP

30 x 18 cm
11.75" x 7"
[2]



Kitchen apron
100% CO
TX0236-ABB

87 x 75 cm
34.25" x 29.5"
[2]



Kitchen apron
100% CO
TX0237-ABK

87 x 75 cm
34.25" x 29.5"
[2]



Kitchen apron
100% CO
TX0238-AGR

87 x 75 cm
34.25" x 29.5"
[2]



Kitchen apron
100% CO
TX0239-ASP

87 x 75 cm
34.25" x 29.5"
[2]



Bread bag
100% CO
TX0240-ABB

40 x 30 cm
15.75" x 11.75"
[2]



Bread bag
100% CO
TX0241-ABK

40 x 30 cm
15.75" x 11.75"
[2]



Bread bag
100% CO
TX0242-AGR

40 x 30 cm
15.75" x 11.75"
[2]



Bread bag
100% CO
TX0243-ASP

40 x 30 cm
15.75" x 11.75"
[2]

100% Cotton. Made in Portugal.





ACCESSORIES / LINENS / KITCHEN LINENS

• ALESSA •

Blueberry, Black, Classic Red, Vanilla, Spicy, Chive



Kitchen towel embroidered
100% CO
TX0223-AEBB
70 x 50 cm
27.5" x 19.75"
[2]



Kitchen towel embroidered
100% CO
TX0224-AEBK
70 x 50 cm
27.5" x 19.75"
[2]



Kitchen towel embroidered
100% CO
TX0225-AERD
70 x 50 cm
27.5" x 19.75"
[2]



Kitchen towel embroidered
100% CO
TX0226-AESP
70 x 50 cm
27.5" x 19.75"
[2]



Kitchen towel twill
100% CO
TX0227-AEGR
70 x 50 cm
27.5" x 19.75"
[2]



Kitchen towel twill
100% CO
TX0218-ATBB
70 x 50 cm
27.5" x 19.75"
[2]



Kitchen towel twill
100% CO
TX0219-ATBK
70 x 50 cm
27.5" x 19.75"
[2]



Kitchen towel twill
100% CO
TX0220-ATRD
70 x 50 cm
27.5" x 19.75"
[2]



Kitchen towel twill
100% CO
TX0221-ATSP
70 x 50 cm
27.5" x 19.75"
[2]



Kitchen towel twill
100% CO
TX0222-ATGR
70 x 50 cm
27.5" x 19.75"
[2]



Kitchen towel herringbone stripes
100% CO
TX0212-ASBB
70 x 50 cm
27.5" x 19.75"
[2]



Kitchen towel herringbone stripes
100% CO
TX0213-ASBK
70 x 50 cm
27.5" x 19.75"
[2]



Kitchen towel herringbone stripes
100% CO
TX0216-ASSP
70 x 50 cm
27.5" x 19.75"
[2]



Kitchen towel herringbone stripes
100% CO
TX0214-ASRD
70 x 50 cm
27.5" x 19.75"
[2]



Kitchen towel herringbone stripes
100% CO
TX0215-ASVA
70 x 50 cm
27.5" x 19.75"
[2]



Kitchen towel herringbone stripes
100% CO
TX0217-ASGR
70 x 50 cm
27.5" x 19.75"
[2]

100% Cotton. Made in Portugal.

ACCESSORIES / LINENS / KITCHEN LINENS

• CARMELA •

Caramel, Blue, Cream-Caramel, Cream-Blue, Amber-Caramel, Amber-Brown



Set 2 pot holders

100% LI

TX0244-CACL

14 x 14 cm

5.5" x 5.5"

[2]



Set 2 pot holders

100% LI

TX0245-CABL

14 x 14 cm

5.5" x 5.5"

[2]



Oven mitt

100% LI

TX0246-CACL

32 x 22 cm

12.5" x 8.75"

[2]



Oven mitt

100% LI

TX0247-CABL

32 x 22 cm

12.5" x 8.75"

[2]



Kitchen apron

100% LI

TX0248-CACC

78 x 71 cm

30.75" x 28"

[2]



Kitchen apron

100% LI

TX0249-CACB

78 x 71 cm

30.75" x 28"

[2]



Kitchen apron

100% LI

TX0250-CACL

78 x 71 cm

30.75" x 28"

[2]



Kitchen apron

100% LI

TX0251-CABL

78 x 71 cm

30.75" x 28"

[2]



Kitchen towel

100% LI

TX0255-CACL

70 x 50 cm

27.5" x 19.75"

[2]



Kitchen towel

100% LI

TX0256-CABL

70 x 50 cm

27.5" x 19.75"

[2]



Kitchen towel

100% LI

TX0257-CACR

70 x 50 cm

27.5" x 19.75"

[2]



Kitchen towel

100% LI

TX0254-CACB

70 x 50 cm

27.5" x 19.75"

[2]



Kitchen towel

100% LI

TX0253-CAAC

70 x 50 cm

27.5" x 19.75"

[2]



Kitchen towel

100% LI

TX0252-CAAB

70 x 50 cm

27.5" x 19.75"

[2]

100% Linen. Made in Portugal.





• KITCHEN TOWELS •

Orange



Set 2 kitchen towels

100% CO

CFT0055-FROL

70 x 50 cm
27.5" x 19.75"
[3]



Set 2 kitchen towels

100% CO

CFT0056-FROS

70 x 50 cm
27.5" x 19.75"
[3]



Set 2 kitchen towels

100% CO

CFT0061-FLOR

70 x 50 cm
27.5" x 19.75"
[3]



Set 2 kitchen towels

100% CO

CFT0070-STOR

70 x 50 cm
27.5" x 19.75"
[3]



Set 2 kitchen towels

100% CO

CFT0065-FSOR

70 x 50 cm
27.5" x 19.75"
[3]

Classic Red



Set 2 kitchen towels

100% CO

CFT0071-STRD

70 x 50 cm
27.5" x 19.75"
[3]



Set 2 kitchen towels

100% CO

CFT0057-FRRL

70 x 50 cm
27.5" x 19.75"
[3]



Set 2 kitchen towels

100% CO

CFT0058-FRRS

70 x 50 cm
27.5" x 19.75"
[3]



Set 2 kitchen towels

100% CO

CFT0068-FSRD

70 x 50 cm
27.5" x 19.75"
[3]

Vanilla



Set 2 kitchen towels

100% CO

CFT0074-STVA

70 x 50 cm
27.5" x 19.75"
[3]



Set 2 kitchen towels

100% CO

CFT0062-FLVA

70 x 50 cm
27.5" x 19.75"
[3]

• KITCHEN TOWELS •

Blueberry



Set 2 kitchen towels

100% CO
CFT0063-FLBB

70 x 50 cm
27.5" x 19.75"
[3]



Set 2 kitchen towels

100% CO
CFT0076-STBB

70 x 50 cm
27.5" x 19.75"
[3]

Forest Green



Set 2 kitchen towels

100% CO
CFT0059-FRGL

70 x 50 cm
27.5" x 19.75"
[3]



Set 2 kitchen towels

100% CO
CFT0060-FRGS

70 x 50 cm
27.5" x 19.75"
[3]

Aqua



Set 2 kitchen towels

100% CO
CFT0064-FLAQ

70 x 50 cm
27.5" x 19.75"
[3]



Set 2 kitchen towels

100% CO
CFT0072-STAQ

70 x 50 cm
27.5" x 19.75"
[3]



Set 2 kitchen towels

100% CO
CFT0067-FSAQ

70 x 50 cm
27.5" x 19.75"
[3]

Dove Grey



Set 2 kitchen towels

100% CO
CFT0066-FSGY

70 x 50 cm
27.5" x 19.75"
[3]



Set 2 kitchen towels

100% CO
CFT0073-STGY

70 x 50 cm
27.5" x 19.75"
[3]

Black



Set 2 kitchen towels

100% CO
CFT0075-STBK

70 x 50 cm
27.5" x 19.75"
[3]



Set 2 kitchen towels

100% CO
CFT0069-FSBK

70 x 50 cm
27.5" x 19.75"
[3]





• OSTERIA •

Black, Vanilla, Blueberry, Italian Rose

Uniquely textured with a micro waffle weave, Osteria towels allow for an elegant mix of colors in your kitchen. The waffle weave is not only lightweight and extremely absorbent, but the texture softens with every washing. Osteria's modern, minimal look is a welcome change from the traditional kitchen towel.



Kitchen towel
micro waffle 100% CO
CFT0084-OSBK

70 x 50 cm
27.5" x 19.75"
[2]



Kitchen towel
micro waffle 100% CO
CFT0081-OSVA

70 x 50 cm
27.5" x 19.75"
[2]



Kitchen towel
micro waffle 100% CO
CFT0082-OSBB

70 x 50 cm
27.5" x 19.75"
[2]



Kitchen towel
micro waffle 100% CO
CFT0083-OSRO

70 x 50 cm
27.5" x 19.75"
[2]

100% Cotton, waffle weave, garment dye. Made in Portugal.

• TERRY STRIPES •

White-Classic Red, Caramel-Classic Red, White-Blueberry, Caramel-Blueberry



**Kitchen towel
terry 100% CO**
CFT0099-WRD

70 x 50 cm
27.5" x 19.75"
[2]



**Kitchen towel
terry 100% CO**
CFT0100-CRD

70 x 50 cm
27.5" x 19.75"
[2]



**Kitchen towel
terry 100% CO**
CFT0101-WBL

70 x 50 cm
27.5" x 19.75"
[2]



**Kitchen towel
terry 100% CO**
CFT0102-CBL

70 x 50 cm
27.5" x 19.75"
[2]

100% Cotton, waffle weave, yarn dye. Made in Portugal.



the
dairy





TABLE LINENS

A table layered with linen becomes a table to be admired. Elevate a simple table setting with our beautiful cloth napkins.

Our singular collections make any casual or more formal table setting stand out.

Made of high-quality Portuguese cotton and linen, these napkins provide just the right amount of texture to the table.

• CAROLINA •

Blue, White-Blue, Red, White-Red, Caramel, White-Caramel



**Napkin 50% LI
50% CO**
CFT0098-CRWC

47 x 47 cm
18.5" x 18.5"
[2]



**Napkin 50% LI
50% CO**
CFT0096-CRWR

47 x 47 cm
18.5" x 18.5"
[2]



**Napkin 50% LI
50% CO**
CFT0094-CRWB

47 x 47 cm
18.5" x 18.5"
[2]



**Napkin 50% LI
50% CO**
CFT0097-CRCA

47 x 47 cm
18.5" x 18.5"
[2]



**Napkin 50% LI
50% CO**
CFT0095-CRRD

47 x 47 cm
18.5" x 18.5"
[2]



**Napkin 50% LI
50% CO**
CFT0093-CRBL

47 x 47 cm
18.5" x 18.5"
[2]

50% Linen 50% Cotton. Made in Portugal.





• EMILIA •

Seed Grey, Latte, Spicy, Blueberry



**Napkin 50% LI
50% CO**
CFT0085-EMGY

47 x 47 cm
18.5" x 18.5"
[2]



**Napkin 50% LI
50% CO**
CFT0086-EMLA

47 x 47 cm
18.5" x 18.5"
[2]



**Napkin 50% LI
50% CO**
CFT0087-EMSP

47 x 47 cm
18.5" x 18.5"
[2]



**Napkin 50% LI
50% CO**
CFT0088-EMBB

47 x 47 cm
18.5" x 18.5"
[2]

50% Linen 50% Cotton. Made in Portugal.

• LUCCA •

Vanilla, Dove Grey, Spicy, Deep Aqua



**Napkin 50% LI
50% CO**
CFT0089-LUVA

47 x 47 cm
18.5" x 18.5"
[2]



**Napkin 50% LI
50% CO**
CFT0090-LUGY

47 x 47 cm
18.5" x 18.5"
[2]



**Napkin 50% LI
50% CO**
CFT0091-LUSP

47 x 47 cm
18.5" x 18.5"
[2]



**Napkin 50% LI
50% CO**
CFT0092-LUAQ

47 x 47 cm
18.5" x 18.5"
[2]

50% Linen 50% Cotton. Made in Portugal.





PLACEMATS

Designed for everyday use, our placemat collection instantly elevates your table. You have two options to choose from: our practical and elegant vinyl placemats, which are super resistant for both indoor and outdoor dining, or our cork placemats, which add a warmer touch to the table.

When the last dishes leave the table, wipe your placemats with a damp cloth, and they are ready to impress all over again.

ACCESSORIES / PLACEMATS



Vintage Port placemat
100% PU
O30196-STN
45.0 x 35.0 cm
17.75" x 13.75"
[6]



Vintage Port placemat
100% PU
O30195-GRY
45.0 x 35.0 cm
17.75" x 13.75"
[6]



Vintage Port placemat
100% PU
O30194-BLU
45.0 x 35.0 cm
17.75" x 13.75"
[6]



Impressions cork placemat
45 cm | 18"
CFO0026-NAT
45.0 x 31.7 H0.5 cm
17.75" x 12.5" H0.25"
[6]



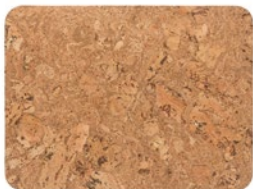
Impressions cork placemat
45 cm | 18"
CFO0027-SMK
45.0 x 31.7 H0.5 cm
17.75" x 12.5" H0.25"
[6]



Set 4 cork rect. placemats
40 cm | 16"
CFO0025-WH
40.0 x 30.0 H0.3 cm
15.75" x 11.75" H0.25"
[1]



Set 4 cork rect. placemats
40 cm | 16"
CFO0024-NT
40.0 x 30.0 H0.3 cm
15.75" x 11.75" H0.25"
[1]



Set 4 rect. placemats
40 cm | 16"
CK12104-IN
40.1 x 29.9 H0.3 cm
15.75" x 11.75" H0.25"
[1]



Set 4 round placemats
37 cm | 15"
CK12107-IG
D36.5 H0.3 cm
D14.5" H0.75"
[1]



Set 4 egg shape placemats
43 cm | 17"
CK12106-IG
42.5 x 31.0 H0.3 cm
16.75" x 12.25" H0.25"
[1]



Set 4 oval placemats
44 cm | 17"
CK12054-IN
44.0 x 28.5 H0.3 cm
17.25" x 11.25" H0.25"
[1]

100% PU, artificial leather. Made in Turkey.
Cork. Made in Portugal.





OAK COLLECTION

Cook or serve with the style, versatility, and timeless beauty of our collection of oak boards, trivets, and utensils.

Handcrafted in Portugal of premium quality Portuguese oak, these items feature attractive design with rustic warmth. Natural variations in the wood's tone and grain make each piece unique.

ACCESSORIES / WOOD COLLECTION

• OAK WOOD •



Oak wood cutting/serving board w/ handle 54 cm | 21"
O30187-OAK
54.0 x 18.0 H2.2 cm
21.25" x 7" H1"
[1]



Oak wood cutting/serving board w/ handle 42 cm | 17"
O30186-OAK
42.0 x 18.0 H2.2 cm
16.5" x 7" H1"
[1]



Oak wood cutting/serving board w/ handle 30 cm | 12"
O30188-OAK
30.0 x 18.0 H2.2 cm
12" x 7" H1"
[1]



Oak wood round cutting/serving board w/ handle 34 cm | 14"
O30190-OAK
43.0 x 34.0 H2.2 cm
17" x 14" H1"
[1]



Oak wood spoon and fork set
O30209-OAK
31.0 x 6.7 H1.25 cm
12.25" x 2.75" H1.25"
[6]



Oak wood spatula
O30210-OAK
31.0 x 8.2 H2.4 cm
12.25" x 3.25" H1"
[6]



Oak wood tong
O30211-OAK
30.0 x 8.0 H2.5 cm
12" x 3.25" H1"
[6]



Gift oak baguette board w/ bread knife
O30236-OAK
Baguette board: 61.2 x 8.7 H5.0 cm 24" x 3.5" H2"
Bread knife: 2.96 T0.08 cm 11.65" T0.03"
[1]



Oak baguette board
O30359-OAK
61.2 x 8.7 H5.0 cm
24" x 3.5" H2"
[1]



Oak wood trivet 39 cm | 15"
O30239-OAK
39.4 x 22.0 H4.4 cm
15.5" x 8.75" H1.75"
[1]



Oak wood trivet 31 cm | 12"
O30238-OAK
31.2 x 22.0 H4.4 cm
12.25" x 8.75" H1.75"
[1]

OVEN-TO-TABLE IN STYLE:
nest your stoneware bakers in
our new form-fitting oak trivets
for tableside serving.

Oak wood. Single plank (boards). Made in Portugal.





BATH COLLECTION

Set a soothing atmosphere in the bathroom with our practical and trendy accessory sets.

Made of fine stoneware in Portugal, our impeccably designed bath accessories are crafted to add enduring style to the bathroom.

ACCESSORIES / BATH COLLECTION

• FONTANA BATH •



Soap/Lotion pump
11 cm | 4"

○ NAD111-WHI

D10.1 H11.0 cm | 0.40 L | 350 g
D4" H4.25" | 14 oz. | 12 oz.
[1]



Tumbler
10 cm | 4"

○ NAC101-WHI

D10.0 H9.8 cm | 0.35 L | 360 g
D4" H4.75" | 12 oz. | 13 oz.
[1]



Soap dish
13 cm | 5"

○ NAR131-WHI

13.2 x 9.5 H1.9 cm | 195 g
5.25" x 3.75" H0.75" | 7 oz.
[6]

• PACIFICA BATH •

Vanilla, Artichoke



Soap/Lotion pump
11 cm | 4"

● XOD111-VAN ● XOD111-ART

D9.0 H10.8 cm | 0.35 L | 295 g
3.5" H4.25" | 1.18 oz. | 10 oz.
[1]



Tumbler
10 cm | 4"

● XOC092-VAN ● XOC092-ART

D8.8 H9.2 cm | 0.33 L | 270 g
3.5" H3.75" | 1.10 oz. | 9.5 oz.
[1]



Soap dish
13 cm | 5"

● SOA161-VAN ● SOA161-ART

10.5 x 16 H1.9 cm | 185 g
4.25" x 6.5" H0.75" | 6.5 oz.
[6]

ACCESSORIES / BATH COLLECTION

• TOSCANA BATH — SPA COLLECTION •

Agljo



Soap/Lotion pump
12 cm | 5"
COD121-CRM

D6.4 H12.2 cm | 0.19 L | 235 g
D2.5" H4.75" | 6 oz. | 8 oz.

[1]



Tumbler
9 cm | 4"
DC092-CRM

D7.7 H9.2 cm | 0.23 L | 268 g
D3" H3.75" | 8 oz. | 9 oz.

[1]



Soap dish
13 cm | 5"
COR131-CRM

13.1 x 9.5 H2.2 cm | 151 g
5.25" x 3.75" H1" | 5 oz.

[6]



Boutique tissue
15 cm | 6"
COX151-CRM

D21.2 H24.7 cm | 6.0 L | 2476 g
D8" H9.75" | 203 oz. | 5 lb 7 oz

[1]

Fine stoneware, matte glaze with unique finish. Made in Portugal.

• TAORMINA BATH •

White, Aqua, White-Gold



Soap/Lotion pump
11 cm | 4"

- TA682-WHI ● TA682-AQU
○ TA682-WGD

D8 H10.7 cm | 0.60 L | 270 g
D3" H4.25" | 20 oz. | 10 oz.

[1]



Tumbler
9 cm | 4"

- TA684-WHI ● TA684-AQU
○ TA684-WGD

D7.7 H9.2 cm | 0.23 L | 268 g
D3" H3.75" | 8 oz. | 9 oz.

[1]



Soap dish
13 cm | 5"

- TA683-WHI ● TA683-AQU
○ TA683-WGD

13.1 x 9.5 H2.2 cm | 151 g
5.25" x 3.75" H1" | 5 oz.

[6]



Boutique tissue
15 cm | 6"

- TA681-WHI ● TA681-AQU
○ TA681-WGD

15.2 x 15.3 H15.3 cm | 1282 g
6" x 6" H6" | 2 lb 13 oz.

[1]



Waste basket
25 cm | 10"

- TA680-WHI ● TA680-AQU
○ TA680-WGD

D21.2 H24.7 cm | 6.00 L | 2476 g
D8" H9.75" | 203 oz. | 5 lb 7 oz.

[1]

AVAILABLE COLORS



○ White



● Aqua



○ White-gold

Fine stoneware, matte glaze (Toscana), glossy glaze (Taormina). Made in Portugal.





PET COLLECTION

With the same aesthetic as our Pacifica collection, we've created a range of stoneware pet bowls that will elevate your best friends' mealtime. There are two sizes and three colors to choose from – vanilla, marshmallow and seed grey. Best of all, they blend perfectly into any interior.

ACCESSORIES / PET COLLECTION

• VANILLA •



Pet food bowl
21 cm | 8"
PBS211-VAN

D21.3 H6.8 cm | 0.44 L | 1370 g
D8.5" H2.75" | 15 oz. | 3 lb
[1]



Pet food bowl
16 cm | 6"
PBS162-VAN

D16.0 H5.1 cm | 0.19 L | 680 g
D6.25" H2" | 6 oz. | 1 lb 8 oz.
[1]

• SEED GREY •



Pet food bowl
21 cm | 8"
PBS211-SEE

D21.3 H6.8 cm | 0.44 L | 1370 g
D8.5" H2.75" | 15 oz. | 3 lb
[1]



Pet food bowl
16 cm | 6"
PBS162-SEE

D16.0 H5.1 cm | 0.19 L | 680 g
D6.25" H2" | 6 oz. | 1 lb 8 oz.
[1]

• MARSHMALLOW •



Pet food bowl
21 cm | 8"
PBS211-MRS

D21.3 H6.8 cm | 0.44 L | 1370 g
D8.5" H2.75" | 15 oz. | 3 lb
[1]



Pet food bowl
16 cm | 6"
PBS162-MRS

D16.0 H5.1 cm | 0.19 L | 680 g
D6.25" H2" | 6 oz. | 1 lb 8 oz.
[1]

Fine stoneware, matte glaze. Made in Portugal.



GOING GREEN

Casafina sees its products and operations as part of a long-life cycle and is committed to taking better care of the community and of the world.

Our Commitment

With the increasing demand for sustainable growth, Casafina has made this our priority.

The effort to go green and to minimize our impact on the environment is always a work in progress. It is no small task – yet for us, it's one of the most important. We commit ourselves daily to protecting the environment, avoiding unnecessary harm through the resources we use and the products we manufacture.

Corporate Sustainability

Creating a sustainable environment, project-by-project:

1. SUSTAINABLE CERAMICS

- Eco-friendly products, reusable and recyclable
- The use of local natural resources minimizes our ecological footprint
- Single fired production that saves energy and reduces emissions into the atmosphere
- Products are made with a high % of recycled materials (clays and glazes), decreasing the use of capital, energy, and natural resources.

2. SUSTAINABLE FACTORY

Industrial facilities that are environmentally-friendly

- Efficient and innovative energy sources
- Use of solar panels
- Waste management policies

and recycling procedures

- Advanced water treatment and reduction of water consumption practices
- Recycled and recyclable packaging.

3. SOCIAL RESPONSIBILITY

Producing ceramics in a socially responsible environment is a vital element to Casafina.

- Our 940 employees are our greatest assets
- We make it our mission to commit to ethical business practices and high standards for human rights
- Building a responsible social culture is the foundation of our business (job creation, philanthropy programs devoted to increase the well-being of the surrounding communities, gender diversity, equality and social inclusion practices)
- We promote and encourage environmentally friendly practices amongst all employees and suppliers.

Good Things Are Green



ENERGY EFFICIENT



SUSTAINABLE PACKAGING



RENEWABLE ENERGY



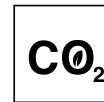
WATER EFFICIENT



INCLUSION



WORK ETHICS



REDUCED EMISSIONS



WASTE REDUCTION



LOCAL NATURAL SOURCES



REUSABLE & RECYCLABLE



GENDER DIVERSITY



SOCIAL & COMMUNITY BENEFITS



SUSTAINABLE PRACTICES

PRODUCT GUIDE

Fine Stoneware

All our stoneware collections are manufactured in Portugal using a single firing system at high-temperature (1180°C / 2160°F). This original formula creates a unique ceramic body very resistant to both thermal and mechanical shocks.

All stoneware products can be safely used in the oven, microwave, and freezer. As a precaution, you should avoid placing the pieces straight from the oven on a cold surface. Do not use it over a direct flame. Avoid the use of products with craquelée surfaces such as Dori collection in the oven and freezer.

They are also dishwasher safe. To ensure the items last longer we advise you to make sure that no item can rub or bump against another during the wash cycle, preventing damage. As a precaution, we recommend you wash oversized items and more delicate pieces by hand.

All pieces used for eating and serving purposes, meet the standards established by the U.S. Food and Drug Administration (FDA) with regard to lead and cadmium content. They are food safe.

Gold-rimmed stoneware items:

- Featuring a hand-painted 18-karat gold rim;
- Not microwave safe;
- Hand wash recommended.

Terracotta (Earthenware)

Made in Portugal by artisans, Casafina's ceramics are handmade and handpainted. It is normal to expect slight design and color variations from piece to piece. Earthenware is low-fired and has a tendency to "craze" (form minuscule lines) with repeated use. This crazing is the nature of earthenware products and does not have any significant effect on the ceramics.

Most terracotta/earthenware items are dishwasher safe, provided they are handled carefully as with any other handmade product. However, hand washing will prolong the life of the product. We do not recommend use in a microwave.

Cork

Our cork collection and our Ensemble collection cork trays are made in Portugal from 100% natural cork.

Keep your pieces as new with only two tips: for daily cleaning we recommend you use a damp cloth to remove impurities; when necessary you may use a cloth moistened with water and mild soap. Store protected from sunlight, moisture, and heat sources. Avoid strong alkalis (dissolves cork). Although food contact safe, to avoid smoke smell, and taste transfer, do not place food directly.

Flatware

Made from high-quality stainless steel (18/10), Pacifica flatware collection in a brushed finish is crafted for exceptional durability and sustainable for everyday use. To maintain the original qualities of all pieces we advise some extra care:

- Remove all the residues after each use, in order to avoid prolonged contact with cutlery pieces;
- For manual washing use hot water, a neutral detergent, and a soft cloth/sponge;
- Do not use abrasive or mechanical aggressive agents;
- Cutlery should be placed in the dishwasher's basket or tray; knives separate from other cutlery;
- After each dishwasher cycle, it is highly recommended that cutlery must be removed from the basket and well dried with a soft cloth;
- There should be special care with the knives and the blades, due to their extra sharpness. As they are more susceptible to oxidization, they should be carefully dried after each wash.
- In order to recuperate the original shine and remove lasting stains from a lesser quality washing, a soft cloth with drops of lemon juice can be used;
- Do not keep your flatware in humid places.

PRODUCT GUIDE

Glassware

Made in Europe, our glassware collections can be safely used in the dishwasher. However, hand washing will prolong the life of the products, especially the more delicate ones. To maintain the original qualities we advise some extra care:

- Before placing glasses in the dishwasher it is advisable to rinse them in lukewarm water to eliminate any residues;
- Washing glassware by hand: hand wash glasses individually with a non-abrasive detergent, warm water, and a soft sponge or cloth;
- In the dishwasher: place glasses in the appropriate rack to avoid scratches. The washing temperature for the dishwasher should be 65°C (140°F) with a rinsing phase at 65°C (149°F) and a washing cycle of approximately 90/120 seconds. Carefully dose the brightener, an excess amount may cause iridescence on the glass surface, and a poor amount leaves water drop marks on the bowl. At the end of the washing program, open the door and leave it ajar for 5-10 minutes to vent steam and avoid the formation of halos on the glass due to condensation;
- Dry with a microfiber cloth.

Glass Domes and Glass drink dispenser with stand

Each dome is mouth-blown glass, a fascinating handmade process which ensures that each piece is one-of-a-kind.

To maintain the original qualities we advise some extra care:

- Wash before first use;
- Dishwashing is not recommended;
- Wash after each use with a non-abrasive sponge;
- Dry with a soft towel to avoid spots.

Kitchen and Table Linens

Made in Portugal of high-quality Portuguese cotton and linen, our kitchen and table linen collections are easy to use and care for. They can be machine washed up and iron up according to the specifications of each fabric.

Metallic stands

Our painted metallic stands are made in Portugal. When necessary we recommend to clean them with a moistened cloth.

Placemats

Vintage Port placemats are made of PU - artificial leather (phthalate-free vinyl). Wipe the placemats with a damp cloth. When necessary you may use a mild soap. Do not put them in the dishwasher or immerse in water.

Wood

Our wood boards, lids, baguette (Pacifica collection), trivets, paper towel holder (Abbey collection) and kitchen utensils are handcrafted in Portugal of premium quality European oak. All pieces are coated with food safe oil.

Fattoria and Poterie paper towel holders are made in Europe of beech wood. They are not coated.

Natural variations in the wood's tone and grain make each piece unique. Handwashing is highly recommended. Wipe the wood pieces with a damp cloth. Do not soak. You can use mild dish detergent when necessary. To maintain the original qualities of all pieces, occasionally rub them with food-safe mineral oil. Use the boards for dry food only.



SIZE AND WEIGHT

FLATWARE						
COLLECTION	PAGE	PRODUCT DESCRIPTION	DIMENSIONS CM	DIMENSIONS IN	WEIGHT GR	WEIGHT LB AND OZ
Pacifica	143	Table knife	24.6 T1.1 cm	10" T0.4 "	85 g	3 oz
Pacifica	143	Table fork	20.9 T0.3 cm	8" T0.1 "	61 g	2 oz
Pacifica	143	Table spoon	20.6 T0.3 cm	8" T0.1 "	80 g	3 oz
Pacifica	143	Dessert knife	20.8 T1 cm	8" T0.4 "	57 g	2 oz
Pacifica	143	Dessert fork	17.7 T0.25 cm	7" T0.1 "	33 g	1 oz
Pacifica	143	Dessert spoon	17.6 T0.25 cm	7" T0.1 "	44 g	2 oz
Pacifica	143	Fish knife	20 T0.25 cm	8" T0.1 "	38 g	1 oz
Pacifica	143	Fish fork	18.2 T0.25 cm	7" T0.1 "	39 g	1 oz
Pacifica	143	Tea spoon	13.6 T0.2 cm	5" T0.1 "	24 g	1 oz
Pacifica	143	Coffee spoon	12 T0.2 cm	5" T0.1 "	14 g	1 oz
Pacifica	143	Bread knife	29.6 T0.08 cm	11.65" T0.03"	75 g	2 oz

*Flatware dimensions are presented as follows: length and thickness.

USE AND CARE

STONEWARE					
COLLECTION	OVEN SAFE	MICROWAVE SAFE	FREEZER SAFE	DISHWASHER SAFE	HAND WASHING RECOMMENDED
Abbey	x	x	x	x	
Cook & Host	x	x	x	x	
Deer Friends	x	x	x	x	
Dori		x		x	
Eivissa	x	x	x	x	
Ensemble	x	x	x	x	
Fattoria	x	x	x	x	
Fontana	x	x	x	x	
Impressions	x	x	x	x	
Madeira Harvest	x	x	x	x	
Mallorca	x	x	x	x	
Monterosa	x	x	x	x	
Nantucket	x	x	x	x	
Pacifica	x	x	x	x	
Poterie	x	x	x	x	
Positano	x	x	x	x	
Sardegna	x	x	x	x	
Taormina (White, Aqua, Black)	x	x	x	x	
Taormina (White & Gold)					x
The Nutcracker	x	x	x	x	
Vermont	x	x	x	x	
Pacifica Pet Collection					x
Bath Collection					x

TERRACOTTA					
COLLECTION	OVEN SAFE	MICROWAVE SAFE	FREEZER SAFE	DISHWASHER SAFE	HAND WASHING RECOMMENDED
Alentejo Terracotta				x	

USE AND CARE

TEXTILE				
COLLECTION	MACHINE WASH UP TO	DO NOT BLEACH	TUMBLY DRY LOW	IRON UP TO
Alessa	40°C/104°F	x	x	150°C/300°F
Carmela	30°C/90°F	x	x	DO NOT IRON
Emilia	40°C/104°F	x	x	150°C/300°F
Kitchen Towels (Flowers, Fruits, French Stripes, Stripes)	40°C/104°F	x	x	150°C/300°F
Osteria	40°C/104°F	x	x	150°C/300°F
Terry Stripes	40°C/104°F	x	x	150°C/300°F
Lucca	40°C/104°F	x	x	150°C/300°F
The Nutcracker	30°C/90°F	x	x	110°C/230°F

FLATWARE		
COLLECTION	DISHWASHER SAFE	HAND WASHING RECOMMENDED
Pacifica	x	

OTHER ACCESSORIES		
COLLECTION	DISHWASHER SAFE	CLEAN W/ CLOTH
Cork		x
Wood		x
Placemats		x

GLASSWARE		
COLLECTION	DISHWASHER SAFE	HAND WASHING RECOMMENDED
Alegria	x	
Arcade		x
Festive	x	
Ottica		x
Riva	x	
Sensa (Clear)	x	
Sensa (Clear with golden rim)		x
Storia	x	
Terrazza	x	

USER GUIDE

Follow these instructions to correctly read the product technical specifications in this catalogue.

Stoneware



Dinner plate
27 cm | 11"
ERP271-SND

D27.2 H3.3 cm | 1020 g
D10.75" H1.25" | 2 lb 4 oz.
[6]



Soup/cereal bowl
16 cm | 6"
ERS161-SND

D16.0 H7.5 cm | 0.69 L | 450 g
D6.25 H3" | 23 oz. | 16 oz.
[6]

**Product
Description**

SKU (REFERENCE)

Diameter, height, length, width in centimetres | capacity in litres
weight in grams

Diameter, height, length, width in inches | capacity in ounces
weight in pounds and ounces

Pack

Glassware



Water glass
500 ml | 17 oz.
CFV0083-CLR

D8 H22 cm | 500 ml | 232 g
D3 H9" | 17 oz. | 8 oz.
[6]



Pitcher
1.60 L | 54 oz.
CFV0088-CLR

D12 H23 cm | 1600 ml | 1194 g
D5 H9" | 54 oz. | 2 lb 1 oz.
[1]

**Product
Description**

SKU (REFERENCE)

Diameter, height in centimetres | capacity in milliliters | weight in grams
Diameter, height in inches | capacity in ounces | weight in pounds and ounces

Pack







CONTACTS

WEBSITE

www.casafinagifts.com

SOCIAL MEDIA

 @casafinaofficial  @casafinagifts

HEAD OFFICE/SHOWROOM

Zona Industrial de Vagos, Lote 78
3840-385 Vagos, Portugal
T: + 351 234 798 132
info@casafinagifts.com

US OFFICE/SHOWROOM

Orchard Ridge Corporate Park
301 Fields Lane
Brewster, NY 10509, USA
P: 845.277.5700
F: 845.277.8958
office@casafinagifts.com

Casafina
SINCE 1981

CASAFINAGIFTS.COM